

July 2008

4WD

ADVENTURERS
Club of SA Inc

www.4wdadventurers.org

Club Newsletter
No. 184



"Before and After the Rain", Bendleby Ranges, Private Property North East of Orroroo, June 2008.



Club Contact Details

Club Meeting Details - Next Meeting Wednesday August 6th 2008

Club meetings are held at 7:30pm on the first Wednesday of each month at the Holden Hill Community Centre (Cnr Valiant Road and Bentley Drive, Holden Hill, SA).

There is no meeting in January.

Please direct all membership enquires to the club membership officer.

Committee Positions

| | | |
|----------------------|-----------------|--|
| President | Murray Martin | |
| Vice President | Jason Rowe | |
| Secretary | Lloyd Kohlhagen | |
| Treasurer | Ziv Golubovic | |
| Minutes Secretary | Mary Callery | |
| Events Officer | Murray Jenke | |
| Public Officer | Rob Stennett | |
| Newsletter Editor | Darryl McManus | |
| Training Officer | Werner Pompeuse | |
| Insurance Rep | Reno Porapat | |
| Association Delegate | John Henderson | |

Appointed Positions

| | | |
|----------------------------|------------------------------------|--|
| Membership Officer | Roger Glaetzer | |
| Property Officer | Ray Collyer | |
| Welcoming Representative | Colin Schubert | |
| Supper Organiser | Heather Deverson Deidre Collyer | |
| Fundraising | Walter Kiess | |
| Club Librarian | Noel Porter | |
| Social Coordinator | To Be Determined. | |
| Environment Officer | To Be Determined. | |
| Aboriginal Liaison Officer | Eric Hofmanis | |

Club trainers: - Werner Pompeuse, David Ladd, Tom Hewitson, Colin Schubert.

Club Web Address

The club website is www.4wdadventurers.org (email webmaster@4wdadventurers.org).

Club Mailing Address

4WD Adventurers Club of SA Inc, PO Box 35, Holden Hill, South Australia, 5088.

General correspondence should be sent to "The Secretary" at the above address.

Club Newsletter

Please provide newsletter items to the editor by the Friday before the next meeting.

Email items in electronic (soft copy) format to newslettereditor@4wdadventurers.org.

Please use comic sans font size 9pt. Paper (hard copy) items may be handed to the editor at the next club meeting or sent to "The Editor" at the mailing address above.

The opinions expressed in this magazine by individual contributors are not necessarily those of the Editor or the 4WD Adventurers Club of SA Inc.

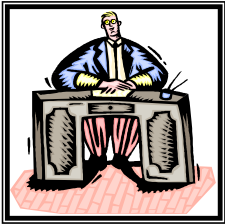
Newsletter Contents

| | |
|--|----|
| Front Cover - "Before and After the Rain", Bendleby Ranges, Private Property North East of Orroroo, June 2008..... | 1 |
| Club Contact Details..... | 2 |
| Club & Association News..... | 3 |
| From the Presidents Desk..... | 3 |
| Editor's Notes (newslettereditor@4wdadventurers.org)..... | 3 |
| Newsletter Sponsors..... | 3 |
| Club Membership Renewal - 2008..... | 3 |
| AGM Notification- 2008..... | 4 |
| Club Advertising..... | 4 |
| Garmin Navigation Items & Vehicle Accessories - Contact Reno Poropat..... | 4 |
| Another Club Trainer - Colin Schubert..... | 4 |
| Product Recalls Australia - Toyota Land Cruiser 100..... | 5 |
| Draft DEH Motor Vehicle Access Policy..... | 5 |
| Recent Trip Reports (Pre-July 2008)..... | 6 |
| Bendleby Ranges - 7 th to 9 th June 2008..... | 6 |
| Spalding - 21 st to 22 nd June 2008..... | 7 |
| Upcoming Trip Details (From July 2008)..... | 9 |
| Mystery Trip Fleurieu Peninsula - 24 th August 2008..... | 9 |
| SAAFWDC Track and Access Information - How to Obtain Track Status..... | 9 |
| SAAFWDC Aboriginal Liaison Unit..... | 9 |
| Trip Calendar (From July 2008)..... | 10 |



Club & Association News

From the Presidents Desk



Well folks it's nearly time. Yes that's right the AGM is looming on the horizon and everyone's thoughts should be "what committee position should I take?" Yeah, I know, I'm living in la-la land. Seriously though, I would like you all to think about taking up a position on the committee or one of the appointed positions. We have a successful club, but every now and then you need to inject some new blood to keep things vibrant and new ideas flowing. The appointed people look after those little jobs that keep things running smoothly. If you don't want to commit to a committee position then please consider one of the appointed positions, remember it is your club and it requires your participation to keep it successful.

I was pleased to see so many visitors at the last meeting. Most said they found out about the club from the internet so it would appear having a web site is starting to pay dividends. Management of the web site is now in the capable hands of Darryl McManus who has taken control from Ziv Golubovic. It was Ziv who took the initiative and created the great web site we now have.

Murray Martin, President 4WD Adventurers Club



Editor's Notes (newslettereditor@4wdadventurers.org)

I was looking forward to a few days of hill and track driving on the Bendleby Ranges property over the June long weekend. However the weather had other plans!

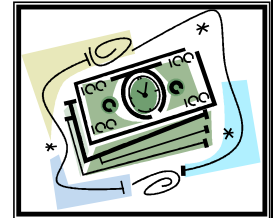
Steady rain on Saturday evening quickly turned the landscape into a series of mud puddles and our driving for the weekend came to a halt. Was I disappointed - yes. However thinking more positively it allowed all of us Adventurers to get to know each other a bit better and see the normally dry landscape with a fresh perspective.

On the way home on Monday I passed through floodways that I have never seen wet flowing with water and already with a tinge of green on the ground. No doubt the landscape will be better for it and I look forward to the scenic benefits on the next visit. Sometimes you need to look to the future to accept the present.

Darryl McManus, Newsletter Editor 4WD Adventurers Club

Newsletter Sponsors

Please support the people who support us.



Phil Black
Consultant

M 0412 808 070
E philip@adelaidelending.com.au

Suite 3/29 Main Street
Mawson Lakes SA 5095

T 08 8260 7082 F 08 8359 8940
W www.adelaidelending.com.au
A.B.N. 69 787 153 821

Raymond Vella
Franchise Owner

Bob Jane T-Marts Pty Ltd
246 Main North Road
Prospect SA 5082
Ph: (08) 269 6688
Fax: (08) 8269 3837
bjprospect@tmarts.com.au
www.bobjane.com.au

BOB JANE T-MARTS

Club Membership Renewal - 2008

Please note that club membership renewal falls due at the August annual general meeting. It needs to be paid by the October general meeting otherwise a late fee may apply. It is still \$60 per year for existing members.

The club treasurer would prefer (if possible) that payment be done on line (i.e. using internet funds transfer). This simplifies cash handling and associated management and reduces the time impost on our busy treasurer.

All the details for membership renewal are contained on the current membership application & renewal form, a soft copy of which can be found at the following web address. This form includes all the details for internet funds transfer.

http://www.4wdadventurers.org/Membership_Form_2008_2009.pdf



AGM Notification- 2008

The annual general meeting (AGM) of the 4WD Adventurers Club of SA Inc will be held on Wednesday August 6th 2008 at the Holden Hill Community Centre (Cnr Valiant Road and Bentley Drive, Holden Hill, SA) commencing at 7.30pm.

Any agenda items or notices of motion should be in writing and be addressed to the Secretary, PO BOX 35, Holden Hill, South Australia, 5088.

These should be received not less than 14 days prior to the AGM.

All committee positions will be declared void and nominations will be sought to fill these positions.

Please cut out or copy the following nomination form and then fill in the details to nominate a club member for a position.

4WD Adventurers

Committee Position Nomination Form 2008



| | |
|-----------------------------|--------------|
| Person Nominated | For Position |
| Nominated By | Signature |
| Second By | Signature |
| Person accepting nomination | Signature |

All above must be financial members of the Club.

Club Advertising

Garmin Navigation Items & Vehicle Accessories - Contact Reno Poropat.

Please phone Reno Poropat on 0418 828 372 if you are interested in these items.

GARMIN GPS V. With City Navigator maps installed \$200.00 ono.

GARMIN MAP60C. With City Navigator \$250.00 ono.

GARMIN GECO 201. Handheld GPS, like new. \$150.00 ono.

ARB Bull bar. To suit 2004 GU series 3 Patrol.

ARB Roof rack. Full Length to fit 2004 GU series 3 Patrol.



A wet campsite -
Rain in the Southern Flinders Ranges, June 2008.

Another Club Trainer - Colin Schubert

Congratulations to Colin for being upgraded from a training adviser to a fully qualified trainer - well done Colin!



Product Recalls Australia - Toyota Land Cruiser 100

http://www.recalls.gov.au/view_recall_detail.php?Recall_ID_Auto=15663

Toyota Land Cruiser 100 and Lexus LX470 - Dash Board Wire Harness Interference with Pedal Support

Date: 26/05/2008

Supplier Name: Toyota Motor Corporation Australia Limited

Product Make: Toyota

Product Model: Land Cruiser 100 and Lexus LX470

Target Number: 47,965

Model Years From: 2002 to 2006

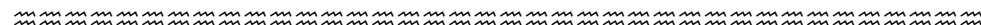
Consequences: In the worst case, the AM 2 fuse blows and the engine stalls and/or may not start.

Campaign Number: 8515D


VIN Range: Land Cruiser 100. Model Code: HZJ105. WMI: JTE. VDS: CB01J#.CB09J#. VIS: From 01007835 to 01029483. 03008441 to 03030251. Production Period. From Aug 2, 2002 to July 14, 2006. Model Code: HDJ100. HC05J#. 04012722 to 04039810. HC09J#. 07005804 to 07020644. Aug 2, 2002 to Jul 21, 2006. UZJ100. HT05J#. 02030459 to 02101947. Aug 2, 2002 to Jul 13, 2006. HT09J#. 05500001 to 05513368. Jul 30, 2002 to Jul 14, 2006. Lexus LX470. UZJ100. JTJ. HT00W#. 03523007 to 04019449. Jul 30, 2002 to Jul 14, 2006. Note: Not all vehicles in the above VIS range were sold in Australia. Hash (#) indicate check digit (alpha or numeric).

Defect Details: On certain Land Cruiser 100 and Lexus LX470 vehicles, there is a possibility that the dash board wire harness may be abnormally twisted changing its intended routing in the vehicle allowing contact with the unprotected edge of the pedal support bracket. If the vehicle is continuously driven on corrugated roads in this condition, the wire harness will rub against the pedal support bracket damaging the wire insulation cover resulting in a short circuit and blown fuse.

Consumer action: All owners of affected vehicles will be contacted individually by letter.



Draft DEH Motor Vehicle Access Policy



FACT SHEET
DRAFT DEH MOTOR VEHICLE ACCESS (TRACKS) POLICY

- Over 21% of South Australia is protected in more than 330 parks and reserves managed by the Department for Environment and Heritage (DEH).
- DEH manages thousands of kilometres of vehicle tracks and beaches which access some of South Australia's most stunning scenery.
- Some of the most popular parks for motor vehicle recreation in SA include the Coorong National Park and Canunda National Park in the Limestone Coast region, Coffin Bay National Park on the Eyre Peninsula and the magnificent Flinders Ranges National Park.

The draft Policy aims to:

- preserve, maintain and enhance the natural and cultural values of parks
- encourage safe, equitable and rewarding recreation opportunities for park users
- provide guidance and consistency in the planning and management of motor vehicle access in parks
- create opportunities for the community to provide input into the management of motor vehicle access in parks.

The draft Policy applies to:

- all reserves managed by DEH under the National Parks and Wildlife Act 1972. This includes national parks, conservation parks, recreation parks, regional reserves and game reserves.
- all Wilderness Protection Areas and Zones under the Wilderness Protection Act 1992
- conservation reserves managed by DEH under the Crown Lands Act 1929.

The policy does not apply to reserves subject to a co-management agreement. An Indigenous Land Use Agreement will take precedence over any inconsistencies with the policy.

Motor vehicle access in parks

- Motor vehicles are allowed on tracks & beaches where vehicle access has been approved.
- Off-track driving or riding will not be authorised in any park.
- Motor vehicle access to tracks and beaches in Wilderness Protection Areas and Zones will generally not be allowed, unless specifically designated in the management plan
- Special access to motor vehicle tracks, not normally open to the public, will be considered on a case-by-case basis taking into account a range of factors.

Proposed changes to motor vehicle access

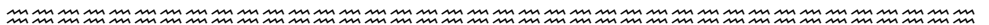
- Any changes proposed to motor vehicle access in parks will normally be considered during the reserve management planning process for a park, which includes compulsory public consultation.
- Decisions involving changes to motor vehicle access, for example creating additional access or track closures, will follow a thorough decision-making process. You can find this process outlined in the DEH Motor Vehicle Access (Tracks) Procedure.
- The construction of new tracks will only occur in exceptional circumstances.

Impacts, Compliance and Future Directions

- Impacts on the environment, cultural sites or other visitors from motor vehicle access will be managed in several ways. This includes signage, working with user groups to promote education initiatives, undertaking compliance patrols, avoiding sensitive areas and closing tracks.
- DEH will undertake a range of compliance methods, including education and enforcement, to reduce the impact of unauthorised motor vehicle use. Penalties up to \$1 250 or imprisonment apply for some offences under the National Parks and Wildlife Act 1972 and Wilderness Protection Act 1992.
- DEH looks forward to working with stakeholders to provide exceptional, safe and sustainable motor vehicle access opportunities in South Australia's protected areas.

This is a summary of a number of draft public documents from DEH that are currently circulating.

If you would like to comment or perhaps see further details please contact the club's association delegate (John Henderson).





Recent Trip Reports (Pre-July 2008)

Bendleby Ranges - 7th to 9th June 2008

On Saturday the 7th of June 2008 the 4WD Adventurers arrived at the Shearers Quarters at Bendleby Ranges, although some people drove up on the Friday night. The participants of the trip were: Lloyd, Monika and Richard Kohlhagen, Brian and Anne Jones, Neil and Anthony Power, Darryl and Allan McManus, Walter and Sabine Kiess, Rob Stennett and Judy Kinnear and Wayne, Jane and Daniel Modystack.

After lunch on Saturday we left for a drive with weather conditions being light showers. The trip lasted around three hours and the track wasn't too difficult. We stopped to have a break while another group was passing us and some people climbed up the tall hill next to where we stopped. From here there was a great view of all of the cars on one side and fog on the other. After we arrived back some people went on the test track which was a bit muddy, and after this everyone sat around the campfire or went inside to the warm shearer's quarters to have dinner.



The next day after heavy rain during the night Lloyd told us the bad news that all of the tracks were closed and we wouldn't be able to go on Billy Goat Ridge as expected. Instead of going up Billy Goat Ridge some went to a

treasure market at a small town south west of Carrieton called Hammond. There was more trash than treasure at Hammond but there were some interesting things to look at.



The training track, meanwhile, had been drenched by the rain and look like a mud pile. The road going to the training track was a lake in it's own right and although we were disappointed by the rain the property owners were delighted by the amount of rain as they hadn't seen as much for many years. That night we watched a movie in the shearing

shed called "Sunday Too Far Away". This movie was about the competitiveness of

shearers and was a good choice and was enjoyed by all. The title of the movie comes from the Shearers wife's lament, which is:

*Friday night he's too tired,
Saturday night he's too drunk,*

Sunday he's too far away.

On Monday we left Bendleby Ranges after an enjoyable trip, even though there wasn't much 4WD driving.

Written by Allan McManus





Spalding - 21st to 22nd June 2008

There was this incessant buzzing in my ear. On rolling my weary eyes to the noise it finally registered on my befuddled brain that it was 5.00 AM. What was I doing awake at this time? Retirees don't get up at this time. It wasn't even light. Of course I was heading off to Spalding for a weekend of mayhem. With this comforting thought I rolled over and tried to settle back into that warm comfortable bed. Then my brief rest was foreshortened when a voice from the other side said "I'll have a cup of tea". Being the sort of person who knows what is best for my long term life prospects I staggered out to meet the cold blustery morning. Now who thinks that 4 wheelers are sane? Have I got some news for them!



Eventually mind, legs and arms finally tended to get some co-ordination and I arrived at Werner's house at 6.00 AM. We packed the car with what we thought was everything and set off. However it was a fairly short excursion as we promptly did a

U turn to pick up some paperwork. This was an auspicious start for as we found out much later there were some other essentials that we should have included. Anyway, off we went into that white mist, heading north. It was comforting to see that there were some equally intrepid [or equally insane] people out at that time keeping us company on the road. The further north we went, the thicker the white stuff became and I kept reminding myself that I believed Murphy was an optimist. Then it rained. We both tried to maintain a positive professional attitude, worked at convincing each other that

all would be fine but fine tuning a list of possible alternative activities to keep the



troops constructively occupied. Passing through a number of what appeared to be ghost towns on the way we eventually arrived at Jeff's place, hung a left and went exploring. Found that things were a little slippery but not too bad and best of all there was some water in the mud hole. So into Spalding to await the troops and have a

cuppa. Only one place at that time of the morning to get a coffee and that was at the



servo as you enter Spalding. Somewhere around the scheduled meeting time some of the members who had registered to participate showed up and off we all went.

PLEASE, IF YOU PUT YOUR NAME ON A TRIP LIST AND FOR WHATEVER REASON CANNOT GO, LET THE TRIP COORDINATOR KNOW. IT ISN'T FAIR ON THE OTHER MEMBERS WAITING TO GET ON WITH THE TRIP. THIS IS ESPECIALLY TRUE WHERE SOME MEMBERS MAY ONLY BE THERE FOR THE DAY.



Into the property, dropped gear off at the campsite and on with the days activities. During the day, we managed some training on stall key start procedures, ditch crossings, irregular terrain, side slopes and fun time at the mud hole. Now this is where we were introduced all to a new skill called SPLATTERING. In no time, being first into the playground the driver demonstrated significant skill in spraying patterns of mud over a wide area.

To give credit though, after performing some track maintenance by filling the tyre tracks with some solid material, [supported by strong words of encouragement from the audience] he managed to extricate himself. Some more participants entered the

proceedings with techniques, vehicle set up and recovery strategies evoking considerable discussion. However eventually, the day drew to an end and the day trippers set off for home while the diehards returned to the camp for an evening of quiet introspection!!

The evening was hilarious with one of the gang demonstrating some unbelievable camp site preparation techniques and meal preparation strategies that left these TV shows



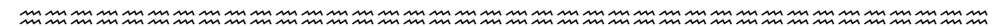
for dead. Meanwhile other chef's attempts paled into insignificance, but by late evening the worms had been fed and we all settled back for a well earned rest. Sunday appeared

all too soon with more white stuff encompassing the camp but it all burned off by late morning and off we went again. More experiential learning was undertaken and all too soon the day drew to an end with the diehards packing up and heading home.

Thanks to all who participated and hope to see more members on the next event.

Well done all, a most enjoyable time.

Steve Collins

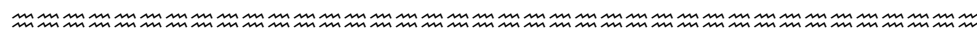




Upcoming Trip Details (From July 2008)

Mystery Trip Fleurieu Peninsula - 24th August 2008

| | |
|---------------------|--|
| Location | Mystery Trip somewhere on the Fleurieu Peninsula |
| Dates | Sunday 24th August 2008. |
| Trip Leader | Ziv Golubovic Phone: 8 263 9942, 0400 707 930. |
| Trip Starting Point | Clarendon - Meet at 9.00 am in the Car Park across from the Bakery. |
| Trip Route | Have a guess. |
| Trip Requirements | Limit of 12 vehicles. Bush Tracks, Grade should be easy. No pets. |
| Fuel Requirements | 250 kms max. |
| Trip Costs | None anticipated. |
| Trip Note | BYO Lunch etc. |



SAAFWDC Track and Access Information - How to Obtain Track Status

(From the SAAFWDC website at <http://www.saafwdc.asn.au/tracks.htm> - Ed).

The areas covered by traveling members of the SAAFWDC are vast, and this association site does not attempt to duplicate what others are already performing in terms of road/track conditions. Rain is a major factor in causing track closure (and stranding) - be informed and be prepared for all weather conditions, and make yourself aware of safety precautions for remote travel.

Please always check for up-to-date information before traveling on 4WD tracks in the Flinders and outback. Regular up-dates are available from the following:

National Parks & Wildlife South Australia.

Internet: www.parks.sa.gov.au for the **Desert Parks Bulletin** that Covers Lake Eyre, Simpson Desert, Innamincka etc.

Telephone: The Desert Parks toll-free hotline on 1800 816 078

Transport SA Northern Road conditions

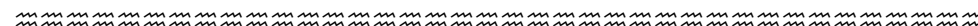
Internet: www.transport.sa.gov.au/quicklinks/northern_roads/northern.asp

Telephone: Their hotline on 1300 361 033.

Australian National Four Wheel Drive Radio Network

Internet: www.vks737.on.net

Road closures for South Australia are regularly broadcast through the VKS 737 network each afternoon (check their site for times/frequencies). Along with any other important road conditions. Their internet site also includes park and track closure information (especially for S.A., and Canning S.R.), and links to relevant internet sites which can provide local details or local telephone contacts. Take note of telephone contacts for the areas you intend to visit.



SAAFWDC Aboriginal Liaison Unit

(From the SAAFWDC website at <http://www.saafwdc.asn.au/ablu.htm> - Ed).

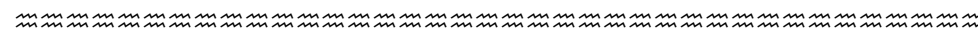
The Aboriginal Liaison Unit is developing the association's policy and education process with regard to indigenous people and their culture. Also relative to this Unit is the fostering of a cooperative effort between this association, Aboriginal land Councils and Communities regarding access to and through Aboriginal lands.

This is based on our mission statement, as follows...

- To liaise, negotiate and assist Aboriginal councils, Communities and relevant Government Departments.
- To encourage the process of reconciliation.
- To enable and assist Members of four wheel drive clubs in South Australia to obtain access to Aboriginal land for the purpose of obtaining a better understanding of Aboriginal ways, their culture and customs.

Four-wheel drivers can contribute to the pool of knowledge on, the monitoring of and possibly even (with DOSAA and local Aboriginal approval) the maintenance of sites. When you visit or just stumble upon an Aboriginal site, observe, examine, appreciate and enjoy the experience but DO NOT under any circumstances, disturb, damage, deface or remove anything from the site. IT IS AN OFFENCE TO DO SO.

Types of sites may include campsites, middens, burial sites, quarry, grindstone and toolmaking sites, stone arrangements for ceremonials, hunting hides and fish traps, paintings, engravings, scarred trees used for canoes, shields etc. If in doubt record the details and leave the site undisturbed.





Trip Calendar Legend
Bold Italic Club Trip Days
Underline Long Week End
 Shaded School Holidays
 ☺ Club Meeting

4WD

ADVENTURERS

Club of SA Inc

www.4wdadventurers.org

1 Easy Maybe 4WD.
 2 Mild 4WD High range.
 3 Moderate Low range, high clearance, experienced.
 4 Difficult Probably recoveries.
 5 Extreme Modified vehicles, possible damage.

Trip Calendar
 From July
 2008

Trip Calendar (From July 2008)

| Month | M | T | W | T | F | S | S | | Dates | Location | Trip Leader | Contact Ph. | Type (Grade) | Notes |
|------------------|-----------|-----------|------------|-----------|-----------|-----------|-----------|-----|-------------|------------------|-----------------|-------------|----------------------|--|
| July | | 1 | 2☺ | 3 | 4 | 5 | 6 | | | | | | | |
| 2008 | 7 | 8 | 9 | 10 | 11 | 12 | 13 | ==> | 07/07-19/07 | Simpson Desert | Michael Cox | | Sand & Hills (2-3) | Desert Scenery. Contact trip leader. |
| | 14 | 15 | 16 | 17 | 18 | 19 | 20 | | | | | | | |
| | 21 | 22 | 23 | 24 | 25 | 26 | 27 | ==> | 25/07-27/07 | Morgan Quarry | Murray Jenke | | Tracks (2-3) | Camping Morgan Caravan Park. Contact trip leader. |
| August | 28 | 29 | 30 | 31 | 1 | 2 | 3 | | | | | | | |
| 2008 | 4 | 5 | 6☺ | 7 | 8 | 9 | 10 | | | | | | | |
| | 11 | 12 | 13 | 14 | 15 | 16 | 17 | | | | | | | |
| | 18 | 19 | 20 | 21 | 22 | 23 | 24 | ==> | 24/08 | Mystery Trip | Ziv Golubovic | | Tracks & Hills | Day Trip. Details in newsletter. |
| | 25 | 26 | 27 | 28 | 29 | 30 | 31 | ==> | 30/08-31/08 | Kuitpo | Werner Pompeuse | | Mud & Water (2-4) | Costs. Training. |
| September | 1 | 2 | 3☺ | 4 | 5 | 6 | 7 | | ??/09 | Spalding | Werner Pompeuse | | Tracks & Hills (2-3) | Costs. Training. Contact trip leader. |
| 2008 | 8 | 9 | 10 | 11 | 12 | 13 | 14 | | ??/09 | Peake | Kym Kinnear | | Sand Dunes (2-3) | Costs. Contact trip leader. |
| | 15 | 16 | 17 | 18 | 19 | 20 | 21 | ==> | 20/09-11/10 | Kings Canyon NT. | Roger Glaetzer | | Hills & Tracks (2-3) | Costs. Contact trip leader. |
| | 22 | 23 | 24 | 25 | 26 | 27 | 28 | | | | | | | |
| October | 29 | 30 | 1 ☺ | 2 | 3 | 4 | 5 | ==> | 04/10-06/10 | Whyalla 4x4 | Rob Stennett | | Tracks & Hills (2-4) | More details later on. |
| 2008 | 6 | 7 | 8 | 9 | 10 | 11 | 12 | \=> | 04/10-08/10 | Pyrenees (Vic.) | Ray Collyer | | Tracks & Hills (2-4) | More details later on. |
| | 13 | 14 | 15 | 16 | 17 | 18 | 19 | | | | | | | |
| | 20 | 21 | 22 | 23 | 24 | 25 | 26 | | | | | | | |
| November | 27 | 28 | 29 | 30 | 31 | 1 | 2 | | ??/11 | Murray R. Mouth | TBD | | Tracks & Sand (2-3) | TBD. |
| 2008 | 3 | 4 | 5☺ | 6 | 7 | 8 | 9 | ==> | 09/11 | Black Hill C.P. | Barry Black | | Marshalls | More details later on. No Cost. |
| | 10 | 11 | 12 | 13 | 14 | 15 | 16 | | | | | | | |
| | 17 | 18 | 19 | 20 | 21 | 22 | 23 | | | | | | | |
| | 24 | 25 | 26 | 27 | 28 | 29 | 30 | | | | | | | |
| December | 1 | 2 | 3☺ | 4 | 5 | 6 | 7 | | | | | | | |
| 2008 | 8 | 9 | 10 | 11 | 12 | 13 | 14 | ==> | 14/12 | Club Rooms | Rob Stennett | | Social | Club Xmas Event - Afternoon/Evening. |
| | 15 | 16 | 17 | 18 | 19 | 20 | 21 | | | | | | | |
| | 22 | 23 | 24 | 25 | 26 | 27 | 28 | | | | | | | |
| January | 29 | 30 | 31 | 1 | 2 | 3 | 4 | | | | | | | |
| 2009 | 5 | 6 | 7 | 8 | 9 | 10 | 11 | | | | | | | |