

June 2009

4WD

ADVENTURERS
Club of SA Inc

www.4wdadventurers.org

Club Newsletter
No. 194



Rhagodia Campsite, Bendleby Ranges Club Trip, April 2009



Club Contact Details

Club Meeting Details - Next Meeting Wednesday July 1st 2009

Club meetings are held at 7:30pm on the first Wednesday of each month at the Holden Hill Community Centre (Cnr Valiant Road and Bentley Drive, Holden Hill, SA).

There is no meeting in January.

Please direct all membership enquires to the club membership officer.

Committee Positions

President	Rob Stennett	
Vice President	Jean Searle	
Secretary	Lloyd Kohlhagen	
Treasurer	Heather Ryland	
Events Officer	Murray Jenke	
Public Officer	Peter Searle	
Newsletter Editor/Minutes	Darryl McManus	
Training Officer	Werner Pompeuse	
Association Delegate	John Henderson	
General Committee Position	Reno Poropat	
General Committee Position	Mike Barham	

Appointed Positions

Membership Officer	Brian Jones	
Property Officer	Ray Collyer	
Welcoming Representative	Murray Martin	
Supper Organiser	Julie Schubert	
Fundraising	Gwenda White	
Club Librarian	Noel Porter	
Aboriginal Liaison Officer	Eric Hofmanis	

Club trainers: - Werner Pompeuse, David Ladd, Tom Hewitson, Colin Schubert.

Club Web Address

The club website is www.4wdadventurers.org (email webmaster@4wdadventurers.org).

Club Mailing Address

4WD Adventurers Club of SA Inc, PO Box 35, Holden Hill, South Australia, 5088.

General correspondence should be sent to "The Secretary" at the above address.

Club Newsletter

Please provide newsletter items to the editor by the Friday before the next meeting. Email items in electronic (soft copy) format to newslettereditor@4wdadventurers.org. Please use "Comic Sans MS" 9pt font. Paper (hard copy) items may be handed to the editor at the next club meeting or sent to "The Editor" at the mailing address above.

The opinions expressed in this magazine by individual contributors are not necessarily those of the Editor or the 4WD Adventurers Club of SA Inc.

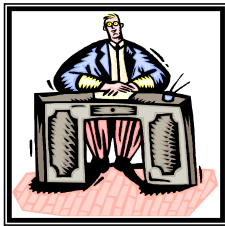
Newsletter Contents

Club Contact Details.....	2
Club & Association News.....	3
From the Presidents Desk.....	3
Editor's Notes (newslettereditor@4wdadventurers.org).....	3
Newsletter Sponsors - Please support the people who support us.....	3
Club Membership Renewal - 2009/2010.....	4
Club Advertising.....	4
Position to Fill - Minutes Secretary for 4WD Adventurers Club.....	4
AGM Notification- 2009.....	4
4WD Matters - Beach Driving.....	5
Desert Park Bulletin 342.....	5
Recent Trip Reports (Pre-June 2009).....	6
Minimum Impact Camping & Touring Guide.....	6
Upcoming Trip Details (From June 2009).....	8
Cabaret Social Evening - 13 th June 2009.....	8
Poonunda (North of Burra) - 6 th - 8 th June 2009.....	8
Innamincka & Birdsville - 13 th - 27 th June 2009.....	9
Naracoorte Caves, Border Track & Big Desert - 4 th - 8 th July 2009.....	9
SAAFWDC Indicative Training Dates for 2009.....	9
Notification of Possible Trips at or beyond December 2009.....	9
Club Trip Calendar (From June 2009).....	10



Club & Association News

Newsletter Sponsors - Please support the people who support us.



From the Presidents Desk

Hi and welcome to all club members and visitors.

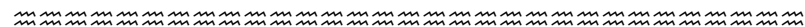
Winter time is a special trip time because we know a good fire can be had at night and along with the fire, always there are good

stories to be told and heard. But don't forget, many times you must bring along some firewood, please check with your trip leader and help him out.

I am a little disappointed that the Subaru club will not be attending our challenge weekend at Bushy's in July and I am also surprised that only 7 vehicles from our club have put their names on the trip sheet. Coonalpyn is not that far away, the weekend camping is cheap and the 4WDing is fairly easy. With some different activities organised I thought the trip offered a lot, but it seems I am wrong, please let me or Murray know what it is you want in a trip as all trips take some organising.

The A.G.M. is not far away and now is a good time to think about what position you want in the club, I have found our current committee is very good to work with and I am sure it will be the same when you join it, so have a good think about a club position

Thanking you, Rob Stennett, President 4WD Adventurers Club

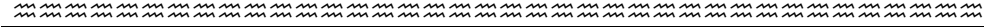


Editor's Notes

newslettereditor@4wdadventurers.org

I have placed the usual annual notices regarding renewing club membership and notification of the club AGM which fall due in August.

Please consider applying for a club position. A number of positions including the minutes secretary, treasurer and events officer will be vacated and will therefore need to be filled at the AGM. Please see the current position holders at the next club meeting for details if you are interested.



NORTHERN SPRING WORKS PTY. LTD.
Spring Makers & General Engineers

TRUCK & 4WD SPECIALISTS
REPAIRS - RESETS - NEW ALL SUSPENSION PARTS
PINS - BUSHES - SHOCKERS ETC.
email: nthspringworks@ozemail.com.au

(08) 8522 6122
Fax (08) 8523 5707
JOHN

9 Royce Avenue
Croydon Park 5008
South Australia

Phone: 08 8241 7175
Fax: 08 8241 7159

GREG'S ALIGNMENT SOLUTIONS

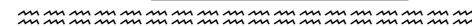
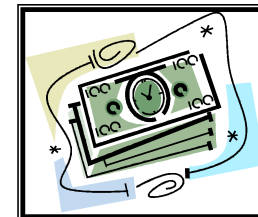
Wheel Alignment and suspension repairs on all cars, 4x4, F series Fords, Coaster Bus and light commercial vehicles.

BOB JANE T-MARTS

Raymond Vella
Franchise Owner
Ph: (08) 8269 6688
240 Main North Road
Prospect SA 5082
Fax: (08) 8269 3837
e: bprospect@tmarts.com.au

TYRES, WHEELS BATTERIES

www.bobjane.com.au



ADELAIDE LENDING CENTRE
-Established 1995-

Phil Black
Consultant

M 0412 808 070
E phillip@adelaidelending.com.au

Suite 3/29 Main Street
Mawson Lakes SA 5095

T 08 8260 7082 F 08 8359 8940
W www.adelaidelending.com.au
A.B.N. 69 787 153 821



Club Membership Renewal - 2009/2010

The club membership renewal falls due at the August annual general meeting. It needs to be paid by the October general meeting otherwise a late fee may apply. It is still \$60 per year for existing members (subject to final approval at the AGM).

All the details for membership renewal are contained on the current membership application & renewal form, a soft copy of which can be found at the following web address.

http://www.4wdadventurers.org/Membership_Form_2009_2010.pdf

If you can't access the soft copy of current membership application & renewal form you can obtain a hard copy from the newsletter editor at the club meeting.

~~~~~  
**Club Advertising**

**Van Seat for Sale - \$350**

To suit a Troop Carrier or similar. Cloth, foldable 3 seater with fittings.

Contact Peter on 0408087060

~~~~~  
Position to Fill - Minutes Secretary for 4WD Adventurers Club

Duties :

- 1) Attend the monthly club meeting, take & write up meeting minutes and distribute to all club members. The newsletter editor will arrange the printing if necessary.
- 2) Attend the committee meeting, take & write up meeting minutes and distribute to all committee members (by email).

Last year the "Minutes Secretary" position was not filled at the club August AGM and the newsletter editor has been doing double duty by filling in for this position. The time required each month is approximately 4 hours additional to attending the club meeting plus the travel time to the committee meeting. It is a straightforward uncomplicated club committee role that only requires word processing skills - meeting templates are available so all you need to do is fill in the detail.

AGM Notification- 2009

The annual general meeting (AGM) of the 4WD Adventurers Club of SA Inc will be held on Wednesday August 5th 2009 at the Holden Hill Community Centre (Cnr Valiant Road and Bentley Drive, Holden Hill, SA) commencing at 7.30pm.

Any agenda items or notices of motion should be in writing and be addressed to the Secretary, PO BOX 35, Holden Hill, South Australia, 5088.

These should be received not less than 14 days prior to the AGM.

All committee positions will be declared void and nominations will be sought to fill these positions.

Please cut out or copy the following nomination form and then fill in the details to nominate a club member for a position.

4WD Adventurers

Committee Position Nomination Form 2009



Person Nominated	For Position
Nominated By	Signature
Second By	Signature
Person accepting nomination	Signature
All above must be financial members of the Club.	



4WD Matters - Beach Driving

"But lots of people on the beach were driving badly"

So said one of our club members about some of the poorly skilled and inconsiderate beach drivers at Beachport and Robe Australia Day 2009.

These were not just "Joe Public" but also a group of "enthusiastic drivers" from a number of FWDSA Clubs.

That weekend National Parks and Wildlife SA (NPWSA) rangers issued 5 expiation notices to unregistered quads and moto-cross bikes.

The FWDSA Club people were not breaking the law, **but were not providing a very good example.** Unfortunately they probably show similar attitudes in inland areas or wherever they drive.

A member of the public complained to the FWDSA President about them, but there were insufficient details for him to approach the clubs involved.

Club Group Cops Expiation Notices and Warnings

The new Motor Vehicle Access Policy negotiated with the Department for Environment and Heritage (DEH) included our claims of responsible driving and care of the environment.

The ink was hardly dry on the documents when Lincoln National Park rangers issued Expiation Notices to 2 members of a FWDSA Club group of 10 and gave a warning to the rest.

The group were driving "off-track" over the sand dunes at Wanna and had not observed the signs directing vehicles to stick to the marked track.

Some time back the local Eyre Peninsula 4WD Club and the FWDSA Natural Resources Advisory Unit fought long and hard over the closure of a track in this area. This latest event is embarrassing and may have strained relations between NPWSA and the local club.

So much for our commitment in the policy documents to ".....**promote safe and sustainable driving practice to other users.....**"

So Who Has Let Who Down?

As FWDSA Club individuals we are responsible for our actions, but we do rely on the support of our club and the Association to guide us.

All organisations get caught up in the day-to-day detail and omit to reinforce what they believe in and stand for. This is a timely reminder.

All levels of FWDSA need to ensure that the rank and file club member is thoroughly versed in the **traditions and obligations** as well as the techniques of 4 Wheel Driving.

There is plenty of material available to assist in this. Codes of conduct for camping and driving are covered in the FWDSA booklets pictured as well as in the Training Manual.

It is up to each member to adopt and practice these principles.

FWDSA Clubs and their members are highly thought of not only in NPWSA but in other areas.

We are trusted to control our activities wherever we are.

Detail - FWDSA President Lee Smith (Northern 4WD Club); Chairman FWDSA NRAU Don Ransom OAM (Toyota Landcruiser Club) - National Parks and Wildlife SA (NPWSA); Department for Environment and Heritage (DEH) communications.
 Edited - by 4WD Adventurers Club of SA Inc. - Direct all correspondence to Editor FWDSA email- safwds@safwdc.asn.au

Disclaimer: While every endeavour is made to ensure the accuracy of the material in this publication, Four Wheel Drive South Australia shall not be held responsible for any errors, omissions or inaccuracies.

Desert Park Bulletin 342

Department for Environment and Heritage
Visitor Information Sheet

National Parks and Wildlife South Australia
Outback Region

DESERT PARKS BULLETIN
NO. 342
11th May 2009

Flooding of the Eyre and Warburton Creeks has altered through access to Birdsville and Clifton Hills. QAA Line to Birdsville is open by the Eyre Creek flood by-pass, and the Warburton Crossing to Clifton Hills is closed.

If you decide to travel in the Outback Region, you should ensure your vehicles are properly prepared and equipped for outback travel and any emergencies or delays. The use of trailers in the Simpson Desert is strongly discouraged. Serious damage can be caused to vehicles and the environment, and difficulties are likely to result. Take extra water, food and fuel supplies. Ensure good communications equipment, either HF Radio or Satellite Phone. Ensure you notify a responsible person, such as a family member, of your plans prior to travelling into remote areas, and seek local advice.

If you attempt driving in sandy conditions and get bogged, do not attempt to get the vehicle out without ensuring 4WD and hubs are engaged, tyre pressures are decreased and sand is removed from the path of the tyres. If you become stuck, do not leave your vehicles to walk for assistance as this can have fatal consequences.

Check road and weather bulletins and local conditions before travelling into the Outback Region. Speed limits of 40km per hour apply within all Parks. For up to date public road information outside of National Parks, please call the **Transport SA Road Condition Hotline on 1300 361 033** or visit the Transport SA web site on http://www.transport.sa.gov.au/quicklinks/northern_roads/northern.asp.

Be aware that entry to Desert Parks requires a day/overnight permit or a Desert Parks Pass that must be displayed on the vehicle windscreen.

LAKE EYRE NATIONAL PARK

Water is continuing to enter Lake Eyre. At this stage it is not believed that the lake will fill to its total volume. Water may be seen from Halligan Bay with the right prevailing winds, but the best way to see Lake Eyre is from the air. Local charters are available at William Creek and Marree.

General Conditions
For further information regarding the National Parks and Wildlife South Australia visit our web site www.parks.sa.gov.au. For information regarding air tours phone the Wadlata Outback Centre on 1800 633 060. Check local conditions before traveling into the Outback area.

If you decide to travel in the following areas you should ensure your vehicles are properly prepared and equipped for outback travel and any emergencies. Take extra water, food and fuel supplies. Ensure good communications equipment. Notify a responsible person of your plans prior to travelling.

Halligan Bay Track - Open to 4WD. This track is a declared Public Access Route. Be aware of vehicles due to increased traffic. Please drive to track conditions. Driving on the Lake surface is an offence and dangerous. 4WD only along this track.

Level Post Bay Track - Open to 4WD. This track is a declared Public Access Route. Driving on the Lake surface is an offence and dangerous. Be aware of vehicles due to increased traffic. Sand drifts have occurred on the road to Level Post Bay and 4WD is required. No camping at level Post Bay - camping at Muloorina campground.

Marree's Outback Roadhouse - Agents for the Desert Parks Pass & Lake Eyre Permits. Post Office & Commonwealth Bank Agency, diesel & unleaded fuel, gas bottle refills, licensed restaurant and take away service available. Ph (61 8) 8675 8360

INNAMINCKA REGIONAL RESERVE

General Vehicle Access.

Visitor sites at Innamincka and Coongie Lakes will be redeveloped in the coming months. Please be cautious of heavy machinery, and sorry for any inconveniences as we improve visitor facilities.

Note: Be aware that entry to Innamincka Regional Reserve requires a day/camping permit or a Desert Parks Pass that must be displayed on the vehicle windscreen. Desert Parks passes/permits are available from the Innamincka Trading Post.

Coongie Track - Open.
Walkers Crossing Track - Open.



15 Mile Track and Access to Cooper Creek – Open.
Cullyamurra Track – Open.

Bore Track – Open. Contact Bollards Lagoon (61 8 8091 3873) prior to crossing private land.

The Innamincka Trading Post (Ph: (61 8) 8675 9900). Agent for the Desert Parks Pass and camping permits. Provide a comprehensive range of supplies and services for visitors in the Innamincka area.
Innamincka Hotel (Ph: (61 8) 8675 9901). Provide meals, drinks and accommodation.

WITJIRA NATIONAL PARK and the SIMPSON DESERT RESERVES

Check local conditions before travelling into this area. See the National Parks and Wildlife South Australia web site on www.parks.sa.gov.au for more information.

Witjira National Park – Open to 4WD with caution.

There is minor erosion along some sections of roads so use caution along these sections – grading will occur soon so please be cautious of a grader along roads. Visitors should purchase permits or Desert Parks Passes before travelling to Witjira. **Spring Creek Delta is permanently closed**, so use the by-pass road east of Dalhousie Springs. Check local conditions before travelling. Please call the **Desert Parks** hotline on **1800 816 078** for further information. A public phone (card only) is available at Dalhousie Springs. (Note: Phone cards **not** available at Dalhousie) Camping is restricted to Dalhousie Springs, 3 O'clock Creek and Purni Bore while within Witjira National Park.

The Pink Roadhouse Oodnadatta – Desert Parks Pass Agents, phone cards, diesel and unleaded fuel, food and travel supplies, fine food, refreshments, tyre and minor repairs and welding
Ph: 1800 802 074 Email: pinkroadhouse@bigpond.com

Simpson Desert – Open to 4WD only. No access/exit via Warburton Crossing.

Please check with local authorities or call the Desert Parks Pass Hotline on 1800 816 078.

Access/exit via the QAA line is open by a sign-posted detour at Eyre Creek.

The first few sand dunes west of the K1/Rig Road intersection along the Rig Road are difficult to traverse and may cause problems for drivers. Sand dunes are constantly being reshaped by dry conditions and prevailing winds. The eastern side of sand dunes are becoming quite steep so extra care must be taken when crossing dunes.

The use of trailers in the Simpson Desert is strongly discouraged. Serious damage can be caused to vehicles and the environment, and difficulties are likely to result.

Visitors are advised to drive in a convoy, carry a HF radio or sat phone and limit the total load of their vehicles. However, do take extra reserves of fuel, food and water. Check local conditions before travelling in the area. Satellite phones are available to hire for Simpson Desert trips from Mt Dare Hotel and the Wirrari Tourism Centre in Birdsville. See contact details below.

Warburton Crossing – Closed due to flooding until further notice.

Mt Dare Hotel – Desert Parks Pass Agents - Diesel and unleaded fuel, accommodation, meals, hot showers, fuel, minor repairs, camping, travel supplies and phone cards available for travellers. Satellite phones are available to hire from Mt Dare Hotel for trips across the Simpson Desert. Contact Mt Dare on (61 8) 8670 7835

ADDITIONAL INFORMATION

Hire of Communications Equipment

Satellite phones can be hired from Birdsville & Mt Dare. For further information call:

Wirrari Centre - Birdsville (61 7) 4656 3300 Mt Dare Hotel (61 8) 8670 7835

CONDITION UPDATES

As conditions change a further update bulletin will be issued. For further information on SA Desert Parks and Far Northern South Australian road and track access, please call the **Desert Parks** toll free hotline on **1800 816 078** or the **Transport SA Outback Roads** hotline on **1300 361 033**.

Alternatively contact local Police where applicable for condition updates. For travel communications, contact the **Australian National 4WD Radio Network Inc** on **(61 8) 8287 6222**.

Tony Magor
District Ranger
DESERT PARKS
desertparks@sa.gov.au



Government of South Australia
Department for Environment
and Heritage



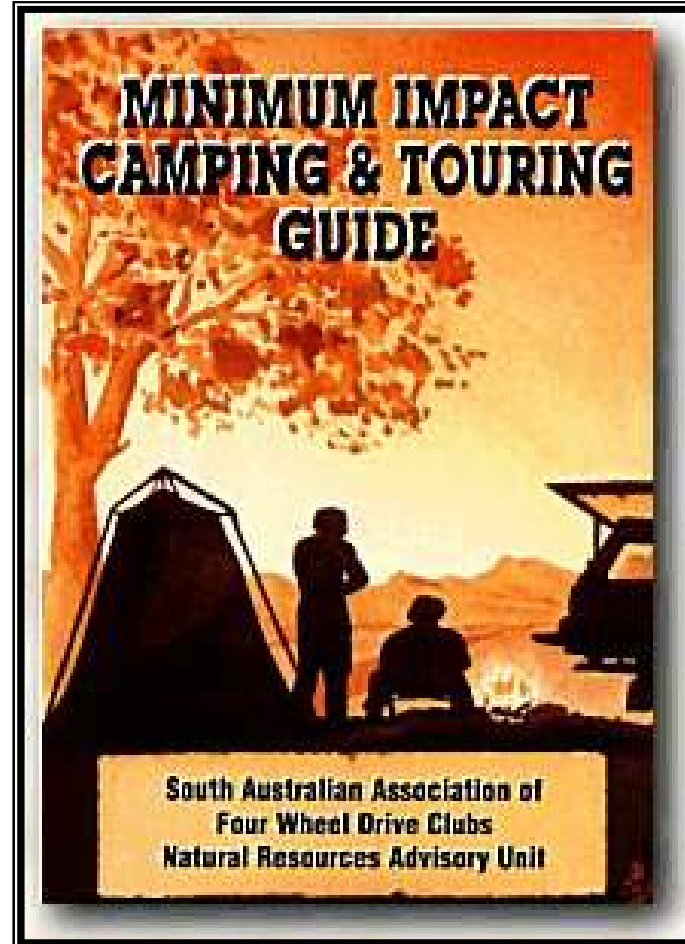
While every attempt has been made to provide up to date information in this bulletin, all travellers are responsible for ensuring that they obtain accurate and detailed information and are properly equipped and prepared for all emergencies prior to traveling into remote outback areas.
Privacy, Disclaimer, Copyright © 2009

Recent Trip Reports (Pre-June 2009)

Minimum Impact Camping & Touring Guide

Available online at <http://www.saafwdc.asn.au/ctguide/guide1.htm>

Ed - Since there has not been enough time after the May trip to Peake to get a trip report ready for the newsletter I have added in details from the "Minimum Impact Camping & Touring Guide" mentioned in the "4WD Matters" article.



A 16 page booklet, prepared by the Natural Resources Advisory Unit, has been distributed to all members since 1998. If you would like a copy, please contact your club delegate, or the Association.

The following is an extract from the introduction.

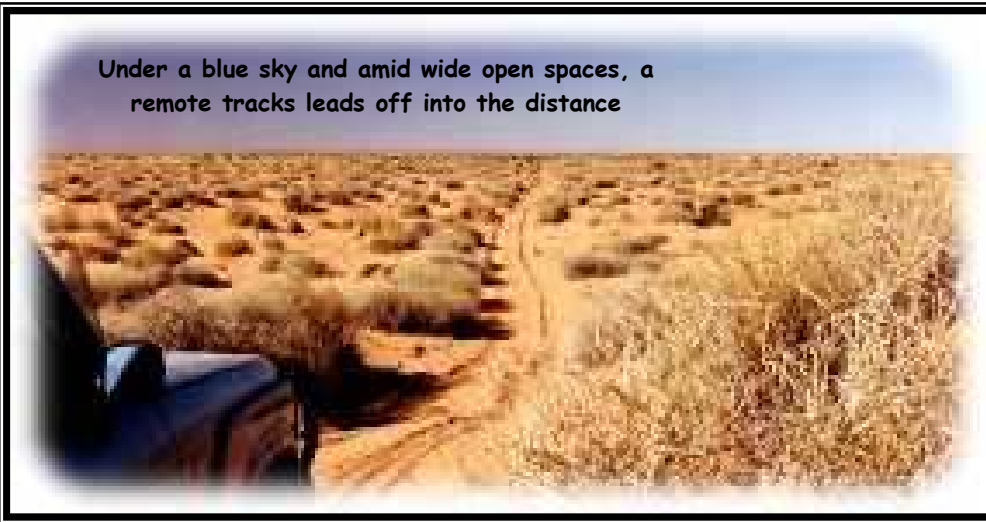
This document contains guidelines recommended for use when camping and touring throughout South Australia. These guidelines are produced to contribute to the development of an awareness of the environment and ecology in all regions of South Australia, enhancing the enjoyment of this state for all visitors, now and in the future.



It is recommended that all tourers particularly those in four wheel drives and their trip leaders become familiar with the guidelines set out in this document. The emphasis being on guide, as a degree of flexibility may be required in some camping and touring situations.

Extra care should be observed when traveling through National and Conservation Parks, which have been set aside because they have an intrinsic environmental value worthy of preservation for future generations. Visitors have a responsibility to ensure that such assets remain intact and undamaged.

This document is designed to promote an awareness of the preservation of the environment and beauty in our Parks and Wilderness areas of South Australia for all to



enjoy for generations to come.

Code of Ethics

- Keep to the laws and regulations on recreation vehicles. They vary from state to state.
- Others have a right to peace and solitude - avoid noisy driving or riding near settlements and general recreation areas.
- Keep to approved vehicle corridors and tracks. On beaches and unvegetated sand areas, drive only where permitted.

- Alpine areas, swamps and vegetated dunes are easily damaged. Avoid them.
- Respect our wildlife. Stop and look, but never disturb or chase animals. It can affect their survival.
- Keep the environment clean. Carry your own and maybe other peoples' rubbish home.
- Keep all fire restrictions. Extinguish your fire before leaving. Don't let your exhaust emit sparks.
- Keep to restrictions on use of public land. Respect national parks and other conservation areas.
- Get permission before driving on private land. Leave livestock alone and gates as found.
- Keep your vehicle mechanically sound and quiet with an efficient muffler.
- Take adequate water, food, fuel and spares on trips. In remote areas travel with another vehicle.
- Join an appropriate and responsible recreation club if you use your vehicle mainly for recreation.





Upcoming Trip Details (From June 2009)

Cabaret Social Evening - 13th June 2009

Location	British Workingmen's Club Corner Davis Street and Morgan Street, Wingfield.
Dates	Saturday 13 th June 2009, 6:30pm start to 12 midnight.
Trip Leader(s)	Rob Stennett 0400 552 872 or Judy Kinnear 0407 883 717.
Trip Route	Make your own way to the location.
Trip Requirements	Adults (18+ years age) with neat casual dress.
Trip Costs	\$15 per person for meal and entry into the cabaret.
Extra notes	The band will be Graeme Hugo & Fully Loaded - country music with soft rock. Names must be on trip board by 30 th May to allow for bookings.



Riverside Campsite at Loveday, April 2009

Poonunda (North of Burra) - 6th - 8th June 2009

Location	Poonunda, North of Burra in the North Mt. Lofty Ranges. (approx 1.75 hr drive)
Dates	6 th - 8 th June 2009
Trip Leader	Ziv Golubovic 8263 9942 Home or 0400 707 930 Mobile
Trip Starting Point	Burra Main Street - meet at 9.30am Saturday
Trip Route	Private property "Poonunda" and surrounds.
Trip Requirements	No Limit to vehicle numbers. Grade of driving varies, depending on participants. Something for everyone from grade 2 to 4. Vehicles must have low range and adequate clearance. Standard 4WD vehicles are quite acceptable.
Fuel Requirements	Burra Main Street - Poonunda - Burra Main Street 300Kms.
Accommodation	Bush Camping, shelter shed, 2 drop toilets. Camper Trailers and smaller caravans with adequate clearance can access property (No low steps or anything that can bottom out in the creek beds*). Wood available for campfire*. (One modest fire only please - no towering infernos).
Trip Costs	\$40 per vehicle for the weekend includes driving and camping for Saturday and Sunday, returning Monday AM. One day drive \$20, Two days & One night \$30 (conditions apply*).
Trip Description	This is a unique property consisting of dry creek beds and steep hills with magnificent views, and a permanent flowing creek with yabbies. All driving skills can be catered for. Only do what you are comfortable with. Lots of relaxation around the campfire, no rushing, no early morning starts. 4WD Adventurers have exclusive use of the property. Visitors welcome
Conditions*	Check with the trip leader for an details on points marked with *.



Innamincka & Birdsville - 13th - 27th June 2009

Location	Innamincka and Birdsville (Expression of interest)
Dates	13 th - 27 th June 2009 (14 day trip)
Trip Leader(s)	Michael Cox 82981659.
Trip Starting Point	To be advised close to the trip commencement.
Trip Route	Scenic trip through the northern SA deserts.
Trip Requirements	No Limit to vehicle numbers. Type and grade of driving is rated as moderate, with some harder sections (2-4). Vehicles will require low range and high clearance. Possible water crossings. Standard Recovery gear essential, UHF radio, vehicle spares.
Trip Accommodation	Bush Camping in desert parks.
Trip Costs	Desert Parks pass will be required.
Notes	Trip dates are flexible, to suit interested trip participants.

Naracoorte Caves, Border Track & Big Desert - 4th - 8th July 2009

Location	Naracoorte Caves and Border Track /Big Desert
Dates	Saturday 4 th and Sunday 5 th July Naracoorte Caves Monday 6 th to Wednesday 8 th July Border Track / Big Desert
Trip Leader(s)	Kym Kinnear Mobile 0417848114
Trip Starting Point	Tailem Bend on Saturday behind Shell Roadhouse
Trip Route	Adelaide to Naracoorte, Border track, Big Desert
Trip Requirements	Type and grade of driving relatively easy, combination of sand dunes, tracks and beach driving. Air compressor essential and standard recovery gear (snatch straps) essential. Sand flag preferred.
Trip Accommodation	Bush Camping on private property 25km from Naracoorte. Flushing toilets, suitable for 2WD vehicles, campers & caravans.
Trip Costs	Cave tour costs start from \$9.00, \$33 for all caves.
Extra notes	This is a 2 part trip, you can attend either or both.
Trip Plan	Saturday - Travel to private property, cave visit late afternoon. Sunday morning - Naracoorte caves, return to Adelaide. For those coming on the Saturday and Sunday only, you can

drive a normal 2WD vehicle, you do not need a 4WD.
For the Monday to Wednesday trip, you will need a 4WD and off-road camper trailer/caravan or a tent for bush camping.

SAAFWDC Indicative Training Dates for 2009

The following dates are an indicative list of SAAFWDC training dates for 2009. These training events are arranged by the SAAFWDC Driver Training Unit (DTU) to enable club members to attain a desired level of proficiency in skills and techniques applicable to their 4WD. An application form needs to be completed when undertaking DTU organised training events. Contact the club training officer, Werner Pompeuse, for more details.

SAAFWDC Indicative Training Dates for 2009

Date	Time	Location	Type of Training
13 th to 14 th June	9.00 am	Warren Gorge	Advanced Recovery and Driving.
25 th to 26 th July	9.00 am	Kuitpo	Basic & Advanced Mud and Water Driving.
15 th to 16 th August	9.00 am	Kuitpo	Basic & Advanced Mud and Water Driving.
29 th to 30 th August	9.00 am	Morgan	Basic and Advanced Recovery and Driving.
20 th September	10.00 am	SAAFWDC Cavan	Tyre Repairs.
10 th to 11 th October	9.00 am	SAAFWDC Cavan	Basic Theory.
31 st October to 1 st November	9.00 am	Peake	Basic Sand Driving.

Notification of Possible Trips at or beyond December 2009

Dates	Location	Trip Leader	Type	Notes
23/01 - 26/01/2010	Port Lincoln/ Coffin Bay	Murray Jenke	Beach & Sand Driving	Camping at Coffin Bay Caravan Park.



Trip Calendar Legend
Bold Italic Club Trip Days
Underline Long Week End
 Shaded School Holidays
 ☺ Club Meeting

4WD

ADVENTURERS

Club of SA Inc

www.4wdadventurers.org

1 Easy Maybe 4WD.
 2 Mild 4WD High range.
 3 Moderate Low range, high clearance, experienced.
 4 Difficult Probably recoveries.
 5 Extreme Modified vehicles, possible damage.

Trip Calendar
 From June
 2009

Club Trip Calendar (From June 2009)

Month	M	T	W	T	F	S	S		Dates	Location	Trip Leader	Contact Ph.	Type (Grade)	Notes
June	1	2	3☺	4	5	<u>6</u>	<u>7</u>	==>	06/06-08/06	Poonunda	Ziv Golubovic		Tracks & Hills (2-4)	Details in newsletter. Bush Camping.
2009	<u>8</u>	9	10	11	12	13	14	==>	13/06	Wingfield	Rob Stennett		Social Evening	Details in newsletter.
	15	16	17	18	19	20	21	==>	13/06-27/06	Innamincka	Michael Cox		Desert & Hills (2-4)	Details in newsletter.
	22	23	24	25	26	27	28							
July	29	30	1☺	2	3	4	5	==>	04/07-08/07	Naracoorte Caves	Kym Kinnear		Sand & Hills (2-3)	Details in newsletter. Bush Camping.
2009	6	7	8	9	10	11	12	==>	11/07-12/07	Coonalpyn	Rob Stennett		Sand & Hills (2-4)	Camping Fees. See trip leader.
	13	14	15	16	17	18	19							
	20	21	22	23	24	25	26							
August	27	28	29	30	31	1	2		??/08	Loveday	??		Tracks & Hills (2-4)	
2009	3	4	5☺	6	7	8	9							
	10	11	12	13	14	15	16							
	17	18	19	20	21	22	23							
	24	25	26	27	28	29	30							
September	31	1	2☺	3	4	5	6							
2009	7	8	9	10	11	12	13	==>	13/09	Kersbrook	Leader Required		Tracks & Hills (2-4)	Day Trip.
	14	15	16	17	18	19	20							
	21	22	23	24	25	26	27							
October	28	29	30	1	2	3	4	==>	03/10-05/10	Arkaroola	Ziv Golubovic		Tracks & Hills (2-4)	Camping at Arkaroola Caravan Park.
2009	5	6	7☺	8	9	10	11							
	12	13	14	15	16	17	18							
	19	20	21	22	23	24	25							
November	26	27	28	29	30	31	1							
2009	2	3	4☺	5	6	7	8	==>	06/11-08/11	Dorado Downs	Leader Required	-	Sand & Hills (2-4)	Camping Fees. Near Geranium.
	9	10	11	12	13	14	15							
	16	17	18	19	20	21	22							
	23	24	25	26	27	28	29							
December	30	1	2☺	3	4	5	6							
2009	7	8	9	10	11	12	13							