

March 2016



4WD

[www.4wdadventurers.org](http://www.4wdadventurers.org)

ADVENTURERS  
Club of SA Inc

Club Newsletter

No. 268



Beach Driving at Port Le Hunte, Fowlers Bay Trip, January 2016.



**Club Contact Details**

**Club Meeting Details - Next Meeting Wednesday 6<sup>th</sup> April 2016**

Club meetings are held at 7:30pm the 1<sup>st</sup> Wednesday of the month (except Jan.) at the Holden Hill Community Centre (Cnr Valiant Road & Bentley Drive, Holden Hill, 5088).

Membership enquires to the membership officer, [members@4wdadventurers.org](mailto:members@4wdadventurers.org).

**Committee Positions**

President	Ian Stanley	
Vice President & FWDSA Delegate	Greg Chase	
Secretary	Lloyd Kohlhagen	
Minute Secretary	Sue Jordan	
Treasurer	Kevin Campbell	
Events Officer	Allen Bing	
Newsletter Editor	Darryl McManus	
General Committee Position	Kathy Dix	
General Committee Position	Werner Pompeuse	
General Committee Position	Allan Rudd	
Public Officer & Membership Officer	John Henderson	

**Appointed Positions**

Training Co-ordinator	Colin Schubert	
Property & Purchasing Officer	Ray Collyer	
Welcoming Representative	Sarah Greatwich	
Supper Organiser Contact	Kathy Dix	
Fundraising	Dale Candida	
Club Librarian	Allan Dix	

Club Trainers: - Werner Pompeuse, Colin Schubert, Dave Bateup, Peter Davis.

Club Bank Account: - 4WD Adventurers Club SA, BSB : 633-000, Account No. : 148345572.

**Club Web and Mailing Address**

The club website is [www.4wdadventurers.org](http://www.4wdadventurers.org) (email [webmaster@4wdadventurers.org](mailto:webmaster@4wdadventurers.org)).

Send mail to 4WD Adventurers Club of SA Inc, PO Box 35, Holden Hill, South Australia, 5088. Send general correspondence to "The Secretary" at that address.

**Club Newsletter**

Please email newsletter items to the editor ([newslettereditor@4wdadventurers.org](mailto:newslettereditor@4wdadventurers.org)) by the Friday before the next club meeting. The opinions in this magazine by contributors are not necessarily those of the Editor or the 4WD Adventurers Club of SA Inc.

**Newsletter Contents**

Front Cover - Beach Driving at Port Le Hunte, Fowlers Bay Trip, January 2016.....	1
Club Contact Details.....	2
Club & Association News.....	3
From the President's Desk.....	3
Editor's Notes (newslettereditor@4wdadventurers.org).....	3
Prospective Club Members - Michael & Amber Barrett.....	3
Newsletter Advertisers - Please support the people who support us.....	3
For Sale 4X4 Accessories- Roof Rails- Contact Elizabeth or Neil Hudson.....	4
For Sale - 2010 Mitsubishi Lancer - Contact Stacey.....	4
"Bushys" Property near Coonalpyn.....	4
Seeking Apprenticeship (Brandon Jenke).....	4
Visit to TJM Nailsworth - 6pm Tuesday 12 <sup>th</sup> April.....	5
4WDSA Delegate Report.....	5
Outback Travel Australia.....	5
11 <sup>th</sup> Australian 4WD Gathering - Loveday (Barmera) - 19 <sup>th</sup> to 22 <sup>nd</sup> August 2016.....	5
Recent Trip Reports (Pre-March 2016).....	6
Hogwash Bend - 20 <sup>th</sup> to 21 <sup>st</sup> February 2016.....	6
Upcoming Trip Details (From March 2016).....	7
Geranium (Dorado Downs) - 4 <sup>th</sup> to 6 <sup>th</sup> March 2016.....	7
Gleasons Landing (Corny Point) - 11 <sup>th</sup> to 15 <sup>th</sup> March 2016.....	7
Ngarkat CP / Border Track Working Bee - 19 <sup>th</sup> to 20 <sup>th</sup> March 2016.....	8
Coorong Cleanup - 25 <sup>th</sup> to 28 <sup>th</sup> March 2016 (Easter).....	8
Pyrenees (Victoria) - 25 <sup>th</sup> to 28 <sup>th</sup> March 2016 (Easter).....	9
Terowie 4WD Park - 26 <sup>th</sup> to 27 <sup>th</sup> March 2016 (Easter) - CANCELLED.....	9
Southern Eyre Peninsula - 25 <sup>th</sup> to 28 <sup>th</sup> March 2016 (Easter) - CANCELLED.....	9
KESAB CLEANUP - Saturday 21 <sup>st</sup> May 2016.....	9
Tag a Long Tour - Yankalilla to Cape Jervis - 10 <sup>th</sup> April 2016.....	10
Victorian High Country - 16 <sup>th</sup> to 24 <sup>th</sup> April 2016 (first week SA school holidays).....	10
Spalding (Training Only) - 30 <sup>th</sup> April to 1 <sup>st</sup> May 2016.....	11
Loveday Adventure Park - 22 <sup>nd</sup> to 25 <sup>th</sup> April 2016.....	12
Melrose - 23 <sup>rd</sup> to 25 <sup>th</sup> April 2016.....	12
Terowie 4WD Park - 14 <sup>th</sup> to 15 <sup>th</sup> May 2016.....	13
Peake - 28 <sup>th</sup> to 29 <sup>th</sup> May 2016.....	13
Club Trip Calendar (From March 2016).....	14



**Club & Association News**  
**From the President's Desk**



Hello to all club members. The 4WD Year is now in full flight with many trips up and coming. The year started well with a barbeque before our first meeting, and a strong showing by you all. Let's keep up the momentum (like climbing a sand hill really!) and try to attend as many trips and meetings as we practically can.

Talking of trips, Bonnie and I will not be at the March general meeting due to our holiday trip to Canada, so Greg and the committee will be carrying on without me. Please give them the support that they need and remember that the normal rules of politeness and courtesy should apply at the meetings. This, of course, includes turning mobile phones to silent and not talking to others while people are speaking at the front, as this causes discomfort for those trying to listen and distracts speakers who are presenting. The acoustics of our hall are not perfect so your cooperation is needed. If the conversation is urgent, please step outside.

There are many upcoming events and a diverse variety of trips so enjoy them and enjoy being a part of one of the best 4WD Clubs in Australia. See you all in April.

**Ian Stanley - Club President.**



**Editor's Notes ([newslettereditor@4wdadventurers.org](mailto:newslettereditor@4wdadventurers.org))**

At the February club committee meeting I indicated that I would NOT be nominating for the newsletter editor / webmaster position at the 2016 Club AGM. After 10 years as newsletter editor, being webmaster

for several years, performing other committee and club positions including clothing officer and minutes secretary for a year or two and occasional substitute as required for other committee positions I feel that this is time to have a break.

So a new newsletter editor and webmaster will be needed, perhaps undertaken by different persons. The newsletter editor role requires a person with good working knowledge of *Microsoft Windows* and *Word*. Although the newsletter editor is not a defined committee position in the club constitution I feel that it is essential for the newsletter editor to attend club committee meetings so as to understand first-hand the information that needs to be communicated to club members.

The webmaster role is straightforward - involving the occasional web page update using the *NetObjects Fusion* program and also requiring knowledge of *Microsoft Windows*.

**Prospective Club Members - Michael & Amber Barrett**

Michael & Amber Barrett are the latest prospective club members.

They have completed the club trips and meeting attendance requirements and wish to apply for club membership. Please contact a committee member if you wish to make any comments regarding the membership application.

**Newsletter Advertisers - Please support the people who support us**



T 8263 1216 MEAT ME ONLINE [valleybutchers.com.au](http://valleybutchers.com.au)  
1/1220 Grand Junction Road, Hope Valley, 5090



P: 08 8359 6121 M: 0421 635 503  
A: Unit 1/9 Ween Road, Pooraka, SA, 5095  
E: [n.tarzia@bigpond.com](mailto:n.tarzia@bigpond.com)





**For Sale 4X4 Accessories- Roof Rails- Contact Elizabeth or Neil Hudson**

At the February 2016 club meeting there were a number of 4x4 accessories for sale shown on the TV screen by Elizabeth Hudson.

Most of the items have been sold however the roof rails remain.

**• ROOF RAILS \$60.00**

(From the photo it seems that the roof rails are ROLA brand lockable roof rails - Ed.).  
The contact for more details is Elizabeth or Neil Hudson, 0416792144 or (08) 82544221.



Photos of both these "For Sale" items are on the clubs website "For Sale" page.  
([http://www.4wdadventurers.org/html/for\\_sale.html](http://www.4wdadventurers.org/html/for_sale.html)).

**For Sale - 2010 Mitsubishi Lancer - Contact Stacey**

2010 Mitsubishi Lancer Activ, 5 speed Manual, **\$10500**

Excellent condition, One owner, Only 55,000 kms

Contact Stacey: 0403 784 692



**"Bushys" Property near Coonalpyn**

Those who have been in the club for some time may recall club trips a number of years ago to "Bushys" property near Coonalpyn.

Rudi Vester has informed us that Bushy is quite ill at the moment and that trips to that property are not currently possible.

Rudi is endeavouring to see Bushy at the Murray Bridge hospital.

**Seeking Apprenticeship (Brandon Jenke)**

**"Young enthusiastic adult looking to begin a trade".**

Open to all areas of trade work, very eager to commit and give my very best to all forms of work.

Please contact me by mobile (0415570299) or by email at [brandonjenke@gmail.com](mailto:brandonjenke@gmail.com).

Brandon Jenke.



**Visit to TJM Nailsworth - 6pm Tuesday 12<sup>th</sup> April**

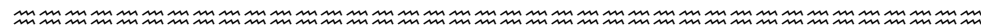
An after-hours visit has been arranged to the TJM store at 163 Main North Road, Nailsworth for Tuesday, 12<sup>th</sup> April 2016 starting at 6.00pm.

The visit has been arranged primarily for those participating in the Tasmania Trip in October & November 2016 but any other club members who might like to join us are welcome. Those already signed up for the Tasmanian trip have been previously informed by email.

Italo Formato (the Owner) has generously offered to provide pizza and soft drinks (as he did the last time we had a visit) and there be staff on hand to answer any questions club members might have. He generally offers trade discount for any club members who wish to purchase products on the evening.

A trip registration sheet will be available at the club meeting in March.

Terri & Dave Bateup.



**4WDSA Delegate Report**

Representatives from 4WDSA recently met with Theresa Andrew from the Department of Environment, Water and Natural Resources (DEWNR). Theresa is leading the development of management plans for the Witjira and Simpson Desert Parks; she invited 4WDSA to participate in initial stakeholder discussions and to remain engaged throughout the process.

The aim is to have a draft plan(s) ready by the end of 2016. The draft(s) will then enter a 3-month period of public consultation, followed by the preparation and release of the final plan(s) in the latter half of 2017.

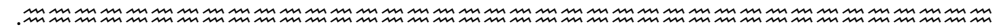
4WDSA will shortly publish a KIT about this activity and the KIT will include information about how members of the 4WD community, or just the general public, can have their say about the management plan.

If you haven't already done so please go to the 4WDSA website and sign up to the email subscription service. This is now the primary way that 4WDSA distributes information to club members. This includes information like tyres & light bar rules, 4WD events and training opportunities from the Driver Training Unit.

The subscription service can be found in the lower right hand corner of the 4WDSA home page, <http://www.4wdsa.asn.au>. Subscribing is easy and you can unsubscribe at any time. Don't worry; you will only receive one or two emails a month.

This is my last report as your 4WDSA delegate; Russel Kruzycki has volunteered to take on that task. I would like to thank Russel for stepping up and getting involved. I will remain on the 4WDSA executive as 4WD SA Vice-President.

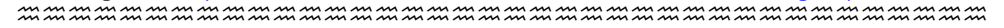
Greg Chase, 4WD Adventurers 4WDSA Delegate.



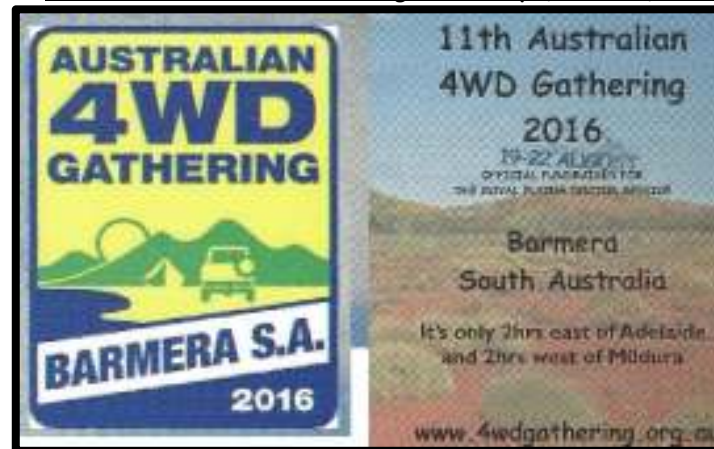
**Outback Travel Australia**

Outback Travel Australia is a 4WD & Remote Area Travel Information website operated by the well known 4WD journalist Allan Whiting.

Club members may find it useful to subscribe to the monthly newsletter via the following link <http://www.outbacktravelaustralia.com.au/newsletter-sign-up>.



**11<sup>th</sup> Australian 4WD Gathering - Loveday (Barmera) - 19<sup>th</sup> to 22<sup>nd</sup> August 2016**

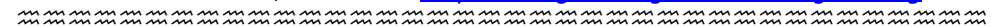


The website promotion says "This Bi-annual event brings together four wheel drivers and like-minded people from across Australia to participate in four wheel driving, the opportunity to meet new 4x4 friends and enjoy a brilliant long weekend somewhere in outback Australia.

The main aim of the gathering is to give four wheel drivers, grey nomads and like-minded people a place to get together to foster friendships and exchange trip information, but importantly to raise money for the Royal Flying Doctor Service (RFDS).

Whether you are in a club or prefer to travel alone or with friends, you are invited to be part of this memorable event at Loveday 4x4 Adventure Park, Barmera, South Australia."

Ed- Although the brochure says the website is <http://www.4wdgathering.org.au> I have that this is unworkable, instead use <http://www.gathering4wd.wix.com/gathering>.





**Recent Trip Reports (Pre-March 2016)**  
**Hogwash Bend - 20<sup>th</sup> to 21<sup>st</sup> February 2016**

"Hogwash Bend"- Where's that? He asked.

"Don't know but we are going to find out this weekend" she replied.

"You guys are always going somewhere aren't you?" the green-eyed jealous workmate wandered off."

"Yes, we are!!!" gloated the smug 4WD Adventurer.

So on the Friday night, with the help of Dieter's great directions, we all converged on a little sandbar of paradise on the Murray River just out of Cadell.

The stress of the workday still lingered but we were ready for the action packed and relaxing weekend ahead. (Yes it can be both.)

This special place can get busy so you need to be prepared to talk to your friendly neighbours. You need to bring your shade tent, bed and bathroom with you as well as

your sense of fun. Maybe also your shopping docket too, otherwise your camper trailer may be unpacked to look for the



The campsite gets busy.

grapes that your loving wife wanted to add to the cheese platter. Right ? Paul ?

It helps to take along a few toys like ski boats, jet skis, wakeboards, canoes and the occasional blowup hotdog to ride in/on /ski on /fall off of. Some people like Dieter and Matt get energetic and made ski ramps to wakeboard/hotdog into the water for our entertainment. Heather, Matt and Paul and Kevin had a go at water skiing to show us

how it is done. Others just want to "Canoodle" (You have to ask Dieter about this). We all enjoyed the serenity and peace of the river once the sun went down. The river is there to dissolve off the stress layers.



Heather catches a ride on the jetski.

Another little hidden gem is just around the corner. The "Caudo" winery is within walking, canoeing or boating distance. We can recommend the Sangria's and cheese platter under the umbrellas overlooking the river. Add to the mix, great company and the beautiful SA sunshine and that equals pure Bliss! What a magic day! Thanks to Skipper Sue we all returned to camp safe and sound.

Thanks to Dieter and Sue for showing us your special place and also Matt & Sue, Baz & Linda, Russell & Lee, Paul & Lea, Heather & Trevor for your company and sense of fun.

Kevin and I had a great weekend.

I'm sure we will be back now we know where to find this beautiful place.


Jenny Campbell



Anyone lost a shoe ?



**Upcoming Trip Details (From March 2016)**  
**Geranium (Dorado Downs) - 4<sup>th</sup> to 6<sup>th</sup> March 2016**

Location	Geranium (Dorado Downs). Day trip (Saturday) or 2 day weekend trip.
Dates	Friday 4 <sup>th</sup> March to Sunday 6 <sup>th</sup> March 2016 (and later dates 7 <sup>th</sup> -8 <sup>th</sup> May, 27 <sup>th</sup> -28 <sup>th</sup> August & 12 <sup>th</sup> -13 <sup>th</sup> November 2016).
Trip Leader(s)	Kevin Campbell ()
Trip Starting Point	<b>For this trip (4<sup>th</sup>-6<sup>th</sup> March 2016) the starting point will be the Tailem Bend Shell RoadHouse at 7:30pm on the Friday evening (4<sup>th</sup> March).</b> Those traveling on the Saturday morning should contact the trip leader who will provide a map so that you can drive directly to the property.
Trip Route	 Scenic trip to a private property near Geranium, approx. 2 hrs from Adelaide.
Trip Requirements	No Limit to vehicle numbers. Type and grade of driving is easy with the occasional more difficult sand dunes, low range. Standard recovery gear essential, UHF radio, Sand Flag.
Trip Accommodation	Bush Camping on private property. Flushing Toilets and Hot Shower available. Shelter shed. Suitable for campers and normal caravans.
Trip Costs	\$30 per day driving. (Camping overnight Saturday included in this cost).
Trip Conditions & Comments	<b>Please bring a bag (or 2) of firewood.</b>

**Gleesons Landing (Corny Point) - 11<sup>th</sup> to 15<sup>th</sup> March 2016**

Location	Gleesons Landing (South of Corny Point, Yorke Peninsula).
Dates	Thursday 11 <sup>th</sup> to Tuesday 15 <sup>th</sup> March 2016 (Long Weekend)
Trip Leader	Ray Collyer ()
Trip Starting Point	Gleesons Landing (South of Corny Point, Yorke Peninsula). Driving time is approximately 4:30 hours from Adelaide.
Trip Route	"Short" day trips in and around Gleesons Landing.
Trip Requirements	Beach recovery gear necessary (shackles & snatch strap). Air compressor, Sand Flag & UHF radio essential.
Fuel Requirements	"Short" day trips only. Easy access to fuel on Yorke Peninsula.
Trip Accommodation	Fully self sufficient bush camping with long drop toilets. <i>* Gleesons Landing is quite a large area and there are several campsites that will accommodate larger groups. Camper trailers and caravans should also be able to find somewhere here, although things may be a bit tight if trying to back a caravan. The sites are sandy dirt, sometimes with a bit of grass in the winter!! Tent pegs are easily placed.</i> <i>* See <a href="http://www.campingsouthaustralia.com/gleesons-landing.php">http://www.campingsouthaustralia.com/gleesons-landing.php</a> for further details of Gleesons Landing.</i> 
Trip Costs	TBD.
Trip Description	Fishing and 4WD'ing extra l-o-n-g weekend (Adelaide Cup). Boat fishing, beach fishing, 4WDing local beaches, also Innes National Park Be prepared for hot to very hot conditions.
Conditions	Caravans and camper trailers are welcome. Also boats have access to a beach launching behind the reef.



**Ngarkat CP / Border Track Working Bee - 19<sup>th</sup> to 20<sup>th</sup> March 2016**

Location	Ngarkat Conservation Park (CP) (near Pinnaroo)
Dates	Saturday 19 <sup>th</sup> to Sunday 20 <sup>th</sup> March 2016. This is the weekend before Easter.
Trip Leader	Darryl McManus ()
Trip Starting Point	Ngarkat CP Park Pine Hut Soak campsite. 9:00am Saturday 19 <sup>th</sup> March (you can setup Friday evening). Adelaide to Pine Hut Soak Campsite - ~approx 3hr, 250km. From Taillem Bend, follow the Mallee Highway; 5km west of Pinnaroo turn right on to Rosy Pine Lane (at Ngarkat Park sign), continue south for approx. 17 km. The campsite is just inside the Park entrance (35° 25.319' S 140° 52.771' E).
Trip Route	Saturday 19 <sup>th</sup> March -Tasks in/near the campground or along the Border Track one-way or two-way sections. Sunday 20 <sup>th</sup> March - Complete tasks and return to Adelaide.
Trip Requirements	Full sand recovery gear, UHF radio (Ch 16), air compressor (recommended) sand flag. If available, please bring the following tools - post hole digging tools, pruners, loppers, bow saw, handsaw, shovel, rake, portable electric grinder, electric drill & drill/spade bits and basic mechanical hand tools. Also bring working gloves, hi-visibility vests, sturdy footwear, sun protection (hat, long sleeves, long pants, sun screen).
Fuel Requirements	Fuel (Petrol & Diesel) available at Pinnaroo, 500 km return to Adelaide, up to ~140 km sand driving required on working bee.
Trip Accommodation	Pine Hut Soak campsite, drop toilet available, otherwise be fully self-sufficient with water, fuel & food. Mallee regional fireban dates still apply so the "camp fire" and cooking will need to use artificial sources.
Trip Costs	None - camping and entrance fees waived for volunteers.
Trip Description	Conservation Park working bee in Mallee country, including repairs and construction of wire and poly pipe barriers, filling track sections with gravel and trimming overgrowing shrubs.
Trip Conditions & Comments	Camper trailers and caravans are OK. Children welcome (under supervision). No pets. <b>Trip may be postponed if the weather is too hot.</b>

**Coorong Cleanup - 25<sup>th</sup> to 28<sup>th</sup> March 2016 (Easter)**

Location	Coorong, South Australia.
Dates	Friday 25 <sup>th</sup> March to Monday 28 <sup>th</sup> March 2016 (Easter)
Trip Leader	Russel Kruzycki ()
Trip Starting Point	Meet at the carpark entrance to 42 Mile Crossing (~20km south-east of Salt Creek along the Princes Highway) 9:00 am on the Friday. Adelaide to Salt Creek ~approx 2:30 hr. 220km.
Trip Route	Friday 25 <sup>th</sup> March - Setup camp at <i>Pitlochry</i> farm, possible drive depending on time available. Saturday 26 <sup>th</sup> March - Coorong Beach drive and Cleanup. Sunday 27 <sup>th</sup> March - Coorong Beach drive, Monday 28 <sup>th</sup> March - Pack up and return to Adelaide.
Trip Requirements	Full recovery gear, UHF radio, air compressor (recommended) sand flag. Bring gloves and buckets and basic cleanup equipment.
Fuel Requirements	Fuel (Petrol & Diesel) available at Salt Creek. <200 km beach driving required.
Trip Accommodation	Camping at <i>Pitlochry</i> farm. Shearer Quarters camping. Hot running water, toilets, showers and kitchen. Possible to camp near the Shearers Quarters using tents, caravans or camper trailers. Rooms available first in best dressed - contact trip leader.
Trip Costs	(Approx. Costs) \$15 per vehicle for overnight camping and/or accommodation.
Trip Description	Sand (beach) driving, Beach cleanup, Beach fishing, Relaxing.
Trip Conditions & Comments	Camper Trailers are OK. Children welcome. No pets.





**Pyrenees (Victoria) - 25<sup>th</sup> to 28<sup>th</sup> March 2016 (Easter)**

(This trip is subject to review at the time of newsletter publication).

Location	Pyrenees Range Trek (Victoria) - ~6 hours east of Adelaide.
Dates	Easter 2016. Friday 25 <sup>th</sup> to Monday 28 <sup>th</sup> March 2016.
Trip Leader(s)	TBD
Trip Starting Point	8:00am Friday 25 <sup>th</sup> March at the rear of the Taillem Bend Shell Roadhouse, then via Stawell to the Pyrenees State Forest (Victoria).
Trip Route	Adelaide, Horsham, Stawell then Highway C221 to Moonambel via Navarre (total of ~ 555km). GPS: 36°59.340'S 143°19.304'E (Moonambel township).
Trip Requirements	Standard recovery gear is essential. Totally self-sufficient camping.
Fuel Requirements	As necessary for the Trip Route noted above. BP Fuel is available at Stawell and Navarre. Both locations have petrol and diesel. Stawell has LPG.
Trip Accommodation	Campground is suitable for tents, off-road camper trailers and caravans. The campground will be the base camp for day trips. Fuel will be easily accessible from local towns. Bring plenty of food, water, fuel and a bag of firewood for the first night. Bow saw and chain saw will be useful.
Trip Costs	Driving costs. No camping fees.
Trip Description	Most of the 4WD tracks are of moderate to difficult grade (4) to extreme tracks with low range descents. Much care is required if the tracks are wet however extreme tracks can be avoided if need be.
Trip Notes	Last good fuel, food and drinking supplies will be at Stawell.

**Terowie 4WD Park - 26<sup>th</sup> to 27<sup>th</sup> March 2016 (Easter) - CANCELLED**

Location	Terowie 4WD Park ( <a href="http://www.terowie4wdpark.com">http://www.terowie4wdpark.com</a> )
----------	--

**Southern Eyre Peninsula - 25<sup>th</sup> to 28<sup>th</sup> March 2016 (Easter) - CANCELLED**

Location	Southern Eyre Peninsula (Coffin Bay)
----------	--------------------------------------

**KESAB CLEANUP - Saturday 21<sup>st</sup> May 2016**

Location	Main North Rd Pooraka
Dates	Saturday 21 <sup>st</sup> May 2016 (and other later dates - 13 <sup>th</sup> August 2016).
Trip Leader(s)	John Henderson ()
Trip Starting Point	Meet South Terrace Pooraka at 9 am. Westside of roundabout just past Alfred St.
Trip Route	Cleanup Main North Rd - Gepps Cross to Montague Rd. <b>Expected duration of 2 to 3 hours.</b>
Trip Requirements	- 4 vehicles with trailers or utes (inform leaders if you can supply a trailer) - good walking shoes, hat, sunblock, handheld UHF radio - drinks -> plenty of water ! - gloves & safety vest (better if you use your own - but if you haven't got any we can supply them.) - litter bags and tongs provided by KESAB
Fuel Requirements	None
Trip Accommodation	N/A
Trip Costs	None
Trip Description	Roadside cleanup of Main North Rd.
Trip Conditions & Comments	<b>BBQ lunch supplied after the cleanup.</b> Children above 10 years old (under supervision). Good covered shoes essential.





**Tag a Long Tour - Yankalilla to Cape Jervis - 10<sup>th</sup> April 2016**



The Lions Club of Yankalilla run a *Tag along Tour* from Yankalilla to Cape Jervis twice a year and the next available trip is Sunday, 10<sup>th</sup> April 2016.

We have a contact in the Southern Explorers Club (Organisers) and he has suggested that some may like to come the day before and stay at the caravan park or he may even find a farm to stay on (no facilities) if enough people are interested.

The cost per vehicle is \$30.00 with the additional cost of \$ 10.00 per person for lunch. This consists of a BBQ of patties, sausages and salad followed by fruit, ice-cream, tea /coffee and soft drinks.

Lunch is at approximately 12.15 pm. They call into Delamere for a toilet stop and you can purchase an ice-cream there if you wish.

We will be travelling through a farmer's property and close up to the windfarms along the way. We finish at Cape Jervis.

Start time is at 9.30 am and concludes at 3.15 pm.

Early notice of numbers would be appreciated by organisers, as they would like to make it a total of 40 cars, broken into two groups.

If we don't get 40 cars, they will open it up to other clubs after we give them our numbers.

Only 4WD vehicles are allowed and they ask that someone who is responsible takes tail end for gates and hopefully not let anyone get lost!

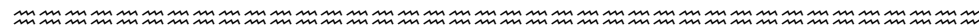
So, please give it some thought and if you're interested there will be a trip sheet available at the next meeting so we can get our numbers to the organisers asap.

We don't believe there will be anything too challenging in this trip which is conducted through private land to Cape Jervis but it will be a pleasant drive and a great day out.

If you have any questions, please contact:

Terri Bateup - [bateupfamily@bigpond.com](mailto:bateupfamily@bigpond.com) or

Julie Schubert -

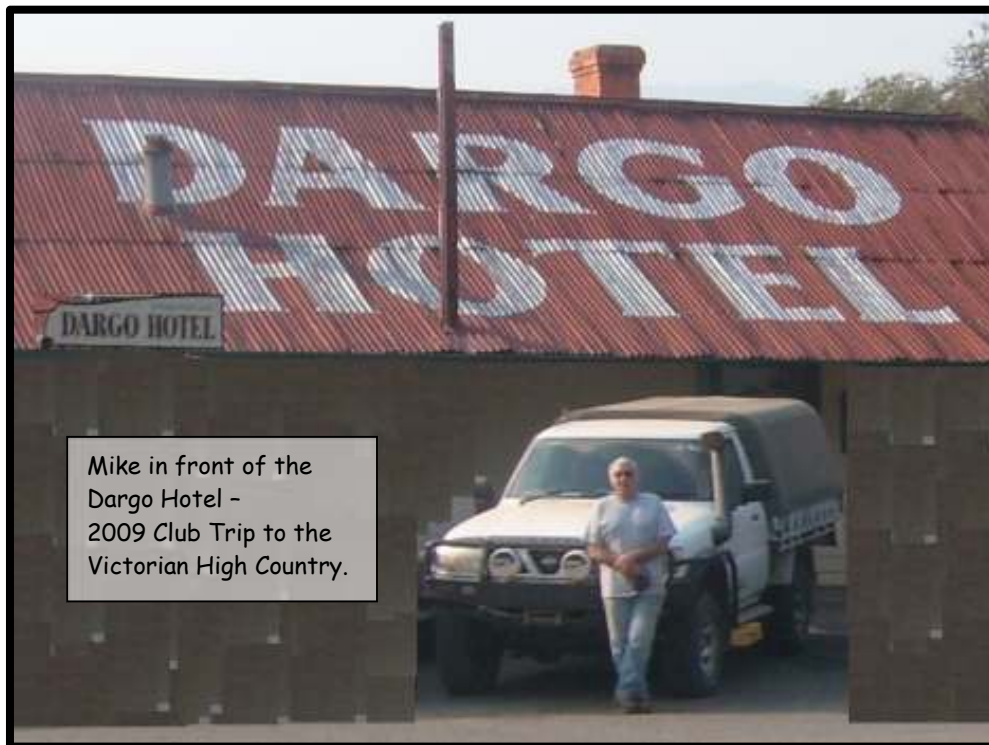


**Victorian High Country - 16<sup>th</sup> to 24<sup>th</sup> April 2016 (first week SA school holidays)**

Location	Victorian Alpine National Park & mountain forest areas around Dargo, Gippsland (Victorian High Country).
Dates	Saturday 16 <sup>th</sup> April to Sunday 24 <sup>th</sup> April, 2016 (this allows for a total of 4 days travel before and after with 5 days driving on tracks, sightseeing, and other activities).
Trip Leader	Lloyd Kohlhausen () An Assistant Leader is required to lead a second group if the total number of vehicles participating is more than 10.
Trip Starting Point	Wonnangatta Caravan Park, 7611 Dargo Rd, near Dargo, Vic. 1060 km from Modbury via Melbourne freeways (with tolls). Arrive Sunday 17 <sup>th</sup> April, track driving starting 9 am Monday 18 <sup>th</sup> April.
Trip Description	Scenic Mountains & Forests in the Victorian High Country, some very steep tracks will be encountered.
Trip Route	<b>(Ref: SA/Vic State Maps; Hema Map: High Country Vic.)</b> Recommended route to caravan park: Dukes & Western Highways to Ararat or Ballarat (free camping area available). Western Freeway M8, Westgate Fwy M1, City Link Burnley Tunnel M1 (toll), Monash Fwy M1, Princes Fwy & Hwy M1 & A1 to Sale, Stratford, then to Brigalong and Dargo. Wonnangatta Caravan Park is 9 km <u>before</u> Dargo.
Trip Requirements	All camping at the caravan park, all driving will be day trips from the caravan park. Convoy Limit: 10 vehicles total; 20 if a 2 <sup>nd</sup> trip leader is available. Driving: sealed highway to caravan park. Track driving: scenic mountain & forest tracks, to grade 4 - very steep and rough in parts, may be challenging if wet.
Fuel Requirements	Total trip length approx. 2500 km. Fuel readily available. Each day trip will not be fuel intensive.



Trip Accommodation	Caravan Park, powered & unpowered sites are available. Showers and toilets available. Campfires permitted in designated pits (drums) only. Fuel, LPG, small shop on site. Dargo close by for all supplies.
Trip Costs	Caravan Park Fees: Powered site: \$38/night (2 people), \$30/night (1 person) Un-powered site: \$28/night (2 people), \$20/night (1 person)
Trip Conditions & Comments	<ul style="list-style-type: none"> <li>• Pets NOT allowed.</li> <li>• Campfires allowed.</li> <li>• Caravans &amp; camper trailers welcome.</li> <li>• Trip is appropriate for children.</li> </ul>



Mike in front of the Dargo Hotel - 2009 Club Trip to the Victorian High Country.

**Spalding (Training Only) - 30<sup>th</sup> April to 1<sup>st</sup> May 2016**

Location	Spalding, North of Clare (approx. 2 hours drive from Adelaide)
Dates	Saturday 30 <sup>th</sup> April to Sunday 1 <sup>st</sup> May 2016 (weather dependant).
Trip Leader	Werner Pompeuse () Colin Schubert ()
Trip Starting Point	8:45am Spalding Main Street near town centre public car park (adjacent to the town hall and playground).
Trip Route	Station tracks on private property near Spalding.
Trip Requirements	Grade of driving 2 to 4 (moderate to difficult with recovery). Vehicles must have low range and adequate clearance. Standard 4WD vehicles are acceptable.
Fuel Requirements	Adelaide - Spalding - Adelaide is less than 400 km.
Accommodation	Bush Camping - no facilities available. Must be fully self-sufficient. Camper trailers with good clearance can access the property.
Trip Costs	(Estimated) \$20 per vehicle per day (\$40 for the weekend). To be confirmed by trip leader.
Trip Description	This trip is intended for Training Only purposes on a private property near Spalding. Driving challenges include creekbeds (wet & dry), gullies, steep hills with good views of the surrounding area, a dam and water crossings.
Conditions & Comments	All trip participants to travel as a group from Spalding town centre to the property. Campfire possible Saturday night - <b>please bring firewood.</b> <b>Training Trip only - no other driving undertaken.</b> <b>Trip will be re-scheduled if the trip leader deems that the weather is too wet or too hot.</b>



**Loveday Adventure Park - 22<sup>nd</sup> to 25<sup>th</sup> April 2016**

Location	Loveday Adventure Park, Near Barmera, South Australia. <a href="http://www.loveday4x4adventures.com">http://www.loveday4x4adventures.com</a>
Dates	(Extra) Long Weekend of 22 <sup>nd</sup> to 25 <sup>th</sup> April 2016
Trip Leader	Sarah Greatwich ()
Trip Starting Point	Meet at the property on Saturday morning, directions available at United Roadhouse on the main highway in Barmera (after hours you will find maps on pump 1). Alternatively, the trip leader is travelling to Loveday on the Friday night. Contact trip leader if you want to meet them.
Trip Route	Entirely on Loveday property, driving the property, competition tracks, camping, fishing, swimming, boating.
Trip Requirements	Standard recovery gear, UHF radio. Air compressor & Sarah requires you to have a good sense of humour.
Fuel Requirements	All fuels available at Barmera.
Trip Accommodation	Bush Camping on the edge of the Murray River, suitable for caravans, campers and boats. Campfire allowed. Toilets and showers available at rear of Loveday tavern.
Trip Costs	\$60 per car (incl. 2WD's) for the first night then \$10 per every extra night after the first night (so that is \$70 if arriving Friday). \$40 per car for a day trip with entire park access.
Trip Description	Type and Grade are easy to difficult, sand, rocks, low range, mud (if wet) - your choice as to what you attempt to drive.
Conditions & Comments	No limit to vehicle numbers. All vehicles must register at Loveday Tavern on arrival. No Motorbikes or Quads allowed. Campfires are allowed, but bring firewood (as firewood collection is NOT allowed on the property). Caravans, campers, boats & skiers are welcome.

**Melrose - 23<sup>rd</sup> to 25<sup>th</sup> April 2016**

Location	Melrose, South Australia.
Dates	Long Weekend of 23 <sup>rd</sup> to 25 <sup>th</sup> April 2016
Trip Leader	Kevin & Jenny Campbell ()
Trip Starting Point	Melrose Caravan Park. 280 km from Adelaide - Ph (08)-86662060. We will be using an unpowered site across the creek - it is school holidays so it may be busy.
Trip Route	Short day trips 1) Bartagunyah drive. 2) Arden hill drive. 3) Mountain bike riding- Bike hire may be available at "Over the Edge "bike shop in town
Trip Requirements	UHF radio /Compressor /Mountain Bike (optional).
Fuel Requirements	Available at Melrose and Quorn.
Trip Accommodation & Costs	Melrose Caravan park unpowered site \$10 /night, showers/ toilet /camp kitchen are available. Please see Kevin so that we can let the park manager know number of people /cars- pay on arrival.
Trip Description	Driving Activities 1) Sat pm -Bartagunyah Winery track- then later Sunset/ nibbles on the Bridle track 2) Sun am -Arden Hills self drive via Quorn (approx 4 hours driving). Options of free time activities. 1) Bike riding, Easy rail trail track to oval - no special bike required (ask Jenny) or any level up to difficult MT bike black tracks - (ask Kevin about these). 2) Walking tracks.
Conditions & Comments	Caravans, Campers and Tents are OK. Please bring wood for Campfire. Dogs are OK at caravan park, but not on the drives.



**Terowie 4WD Park - 14<sup>th</sup> to 15<sup>th</sup> May 2016**

Location	Terowie 4WD Park ( <a href="http://www.terowie4wdpark.com">http://www.terowie4wdpark.com</a> )
Dates	Weekend of 14 <sup>th</sup> and 15 <sup>th</sup> May 2016 (and other later dates - 9 <sup>th</sup> -10 <sup>th</sup> July and 15 <sup>th</sup> -16 <sup>th</sup> October 2016).
Trip Leader(s)	Harley Duncan ()
Trip Starting Point	8:30am on the Saturday morning of the trip. Meet at the Barrier Highway Service Station at Terowie. This is approximately 2 ½ hrs from Adelaide via Burra.
Trip Route	General track driving with great climbs to fantastic views. Property has over 3500 acres of 4WD tracks of varying difficulty.
Trip Requirements	Self-sufficient camping. Camper trailers ok. No Limit to vehicle numbers. Driving: Sand, rocks, hill climbs grade 3 to 4. No special equipment needed, bring standard recovery gear.
Fuel Requirements	No specific fuel requirements related to the route. Petrol, Diesel and LPG available at the nearby Terowie service station.
Trip Accommodation	Self-sufficient camping if staying overnight. Firewood supplied.
Trip Costs	Cost to access tracks & camping fee - \$20.00/day vehicle & driver + \$5/day additional adult.
Trip Description	Challenging creek bed driving and hill climbs. Alternative routes and tracks are available.
Trip Conditions & Comments	Constraints or comments on the trip. <ul style="list-style-type: none"> <li>• pets NOT allowed</li> <li>• campfires allowed (pending local restrictions and fire danger status).</li> <li>• camper trailers allowed</li> <li>• trip is appropriate for children</li> </ul> <b>Trip may be cancelled if the weather is too hot or wet.</b>

**Peake - 28<sup>th</sup> to 29<sup>th</sup> May 2016**

Location	Peake - Day trip or 2 day weekend trip
Dates	Weekend of 28 <sup>th</sup> to 29 <sup>th</sup> May 2016 (and 10 <sup>th</sup> to 11 <sup>th</sup> December 2016).
Trip Leader(s)	Allen Bing ()
Trip Starting Point	In Peake at a parking area near "Polly's Well" historic point (northern side of the Mallee Highway opposite the Peake hotel) at 9:00 am on the Saturday. Contact trip leader if you wish to setup on the Friday evening.
Trip Route	<b>Note: Training may be available, discuss with trip leader.</b> Scenic trip along the Princes Highway to Tailern Bend and then east along the Mallee Highway to the trip starting point at Peake at your own pace. Peake is ~50km east from Tailern Bend along the Mallee Highway (~2 hrs from Adelaide to Peake). There is a very short distance (a few km's) from the trip starting point to the Peake property.
Trip Requirements	No Limit to vehicle numbers. Type and grade of driving is generally easy to moderate, with more difficult sand dunes available as a challenge. Standard recovery gear essential, UHF radio, Sand Flag.
Trip Accommodation	Bush Camping costs on private property. Long drop Toilets. Shelter shed. Suitable for campers and normal caravans.
Trip Costs	\$20 per day driving which includes camping overnight Saturday.
Conditions & Comments	<b>Please bring a bag of firewood.</b> Dogs OK - must be well behaved and ALWAYS on a leash. Training may be available (for club members) - see trip leader. <b>Trip may be cancelled if the weather is too hot or wet.</b>



Trip Calendar Legend  
**Bold Italic** Club Trip Days  
Underline Long Week End  
 Shaded School Holidays  
 ☺ Club Meeting



**ADVENTURERS**  
 Club of SA Inc

www.4wdadventurers.org

1 Easy Maybe 4WD.  
 2 Mild 4WD High range.  
 3 Moderate Low range, high clearance, experienced.  
 4 Difficult Probably recoveries.  
 5 Extreme Modified vehicles, possible damage.

Trip Calendar  
 From  
 March 2016

**Club Trip Calendar (From March 2016)**

Month	M	T	W	T	F	S	S	Dates	Location	Trip Leader	Contact Ph.	Type (Grade)	Notes
								/=> 04/03-06/03	Geranium	Kevin Campbell		Sand & Hills (3)	Dorado Downs. See newsletter page 7.
<b>March</b>		1	2☺	3	4	5	6	/=> 11/03-15/03	Yorke Peninsula	Ray Collyer		Sand & Beach (2-4)	See newsletter page 7.
<b>2016</b>	7	8	9	10	11	12	13	/=> 19/03-20/03	Ngarkat CP	Darryl McManus		Sand & Hills (3)	Working Bee - See newsletter page 8.
	14	15	16	17	18	19	20	/=> 25/03-28/03	Coorong	Russel Kruzycki		Beach & Sand (3)	See newsletter page 8. Coorong Cleanup.
<b>(EASTER)</b>	21	22	23	24	25	26	27	=> 25/03-28/03	Pyrenees (Vic.)	TBD	TBD	Tracks & Hills (4)	See newsletter page 9.
<b>April</b>	28	29	30	31	1	2	3	/=> 10/04	Cape Jervis	Terri Bateup		Tracks & Hills (2)	See newsletter page 10.
<b>2016</b>	4	5	6☺	7	8	9	10	/=> 12/04	TJM Nailsworth	Terri Bateup		TJM Store Visit	See newsletter page 4. Starts 6pm.
	11	12	13	14	15	16	17	=> 16/04-24/04	Vic. High Country	Lloyd Kohlhagen		Tracks & Hills (4)	See newsletter page 10.
	18	19	20	21	22	23	24	=> 22/04-25/04	Loveday (Barmera)	Sarah Greatwich		Tracks & Hills (3)	See newsletter page 12.
<b>May</b>	25	26	27	28	29	30	1	\=> 23/04-25/04	Melrose	Kevin Campbell		Tracks & Hills (3)	See newsletter page 12.
<b>2016</b>	2	3	4☺	5	6	7	8	\=> 30/04-01/05	Spalding	Werner Pompeuse		Tracks & Hills (4)	See newsletter page 11. <b>Training trip only!</b>
	9	10	11	12	13	14	15	\=> 07/05-08/05	Geranium	TBD	TBD	Sand & Hills (3)	Dorado Downs. See newsletter page 7.
	16	17	18	19	20	21	22	\=> 14/05-15/05	Terowie 4WD Park	Harley Duncan		Tracks & Hills (3)	See newsletter page 13.
	23	24	25	26	27	28	29	\=> 21/05	Main North Road	John Henderson		Cleanup Event	See newsletter page 9.
<b>June</b>	30	31	1☺	2	3	4	5	\=> 28/05-29/05	Peake	Allen Bing		Sand & Hills (3)	See newsletter page 13.
<b>2016</b>	6	7	8	9	10	11	12						Queen's Birthday Long Weekend.
	13	14	15	16	17	18	19						
	20	21	22	23	24	25	26						
<b>July</b>	27	28	29	30	1	2	3						
<b>2016</b>	4	5	6☺	7	8	9	10	=> 09/07-10/07	Terowie 4WD Park	TBD	TBD	Tracks & Hills (3)	See newsletter page 12.
	11	12	13	14	15	16	17	=> 16/07-17/07	Fromm's Farm	Kathy Dix		Social Camping	Mt Crawford. Details later (shared costs).
	18	19	20	21	22	23	24						
	25	26	27	28	29	30	31						
<b>August</b>	1	2	3☺	4	5	6	7						
<b>2016</b>	8	9	10	11	12	13	14	=> 13/08	Main North Road	John Henderson		Cleanup Event	See newsletter page 9.
	15	16	17	18	19	20	21	=> 19/08-22/08	Loveday (Barmera)	Community 4WD Event		4WD Gathering	See newsletter page 5.
	22	23	24	25	26	27	28	=> 27/08-28/08	Geranium	TBD	TBD	Sand & Hills (3)	Dorado Downs. See newsletter page 7.
<b>September</b>	29	30	31	1	2	3	4	=> 03/09-04/09	Fromm's Farm	Kathy Dix		Social Camping	Mt Crawford. Details later (shared costs).